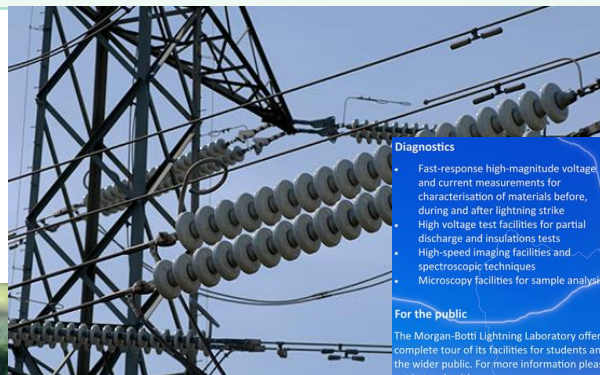


Codice	UK-CARDIFF01
Destinazione	Cardiff (UK)
Università	Cardiff University
Posti a bando - mesi	2 – 6 mesi
Lingua / livello richiesto	Inglese /B2
Attestato Lingua richiesta	Attestato Ateneo
Livello di studi	Laurea Magistrale
Area	Electricity & Energy
Link	http://www.cardiff.ac.uk/study/international/erasmus
Note	

Responsabile Flusso	Roberto Turri
Contatto e-mail	roberto.turri@unipd.it

Codice	UK-CARDIFF01
Livello di studi	Laurea Magistrale
CCS Interessati	LM Ingegneria Energia Elettrica
Attività	Solo tesi di laurea
Link a centri di ricerca	https://www.cardiff.ac.uk/research/explore/research-units/advanced-high-voltage-engineering-research-centre
Note particolari/commenti	Tesi nel campo dei Sistemi Elettrici per l'Energia (High Voltage Engineering, Renewables, Transmission System).





MBLL
Morgan-Botti
Lightning Laboratory



Diagnostics

- Fast-response high-magnitude voltage and current measurements for characterisation of materials before, during and after lightning strike
- High voltage test facilities for partial discharge and insulations tests
- High-speed imaging facilities and spectroscopic techniques
- Microscopy facilities for sample analysis

For the public

The Morgan-Botti Lightning Laboratory offers a complete tour of its facilities for students and the wider public. For more information please get in touch with us.

Contact us
+44 (0) 292 048 2093
Haddad@cf.ac.uk
lightning.engineering.cf.ac.uk

**The Morgan-Botti
Lightning Laboratory**

Visit us
Morgan-Botti Lightning Laboratory
Unit B1, Compass Business Park
Pacific Road
Cardiff
CF24 5HL

A collaboration with 