

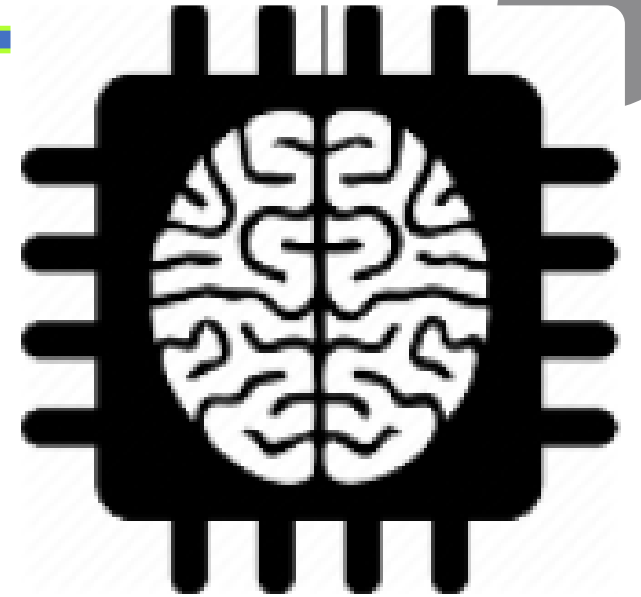
# Formazione Tecnici Università PD

BIAMP TESIRA  
SHURE MXA310



# AGENDA

- TESIRA – DSP
  - Cos'è una “Partizione”
  - Cos'è un Sistema
- Tipologie di ingressi - uscite
- Come collegarsi ai dispositivi
- Analisi della programmazione installata
- Stringhe di comando - controllo
- CANVAS – Cos'è

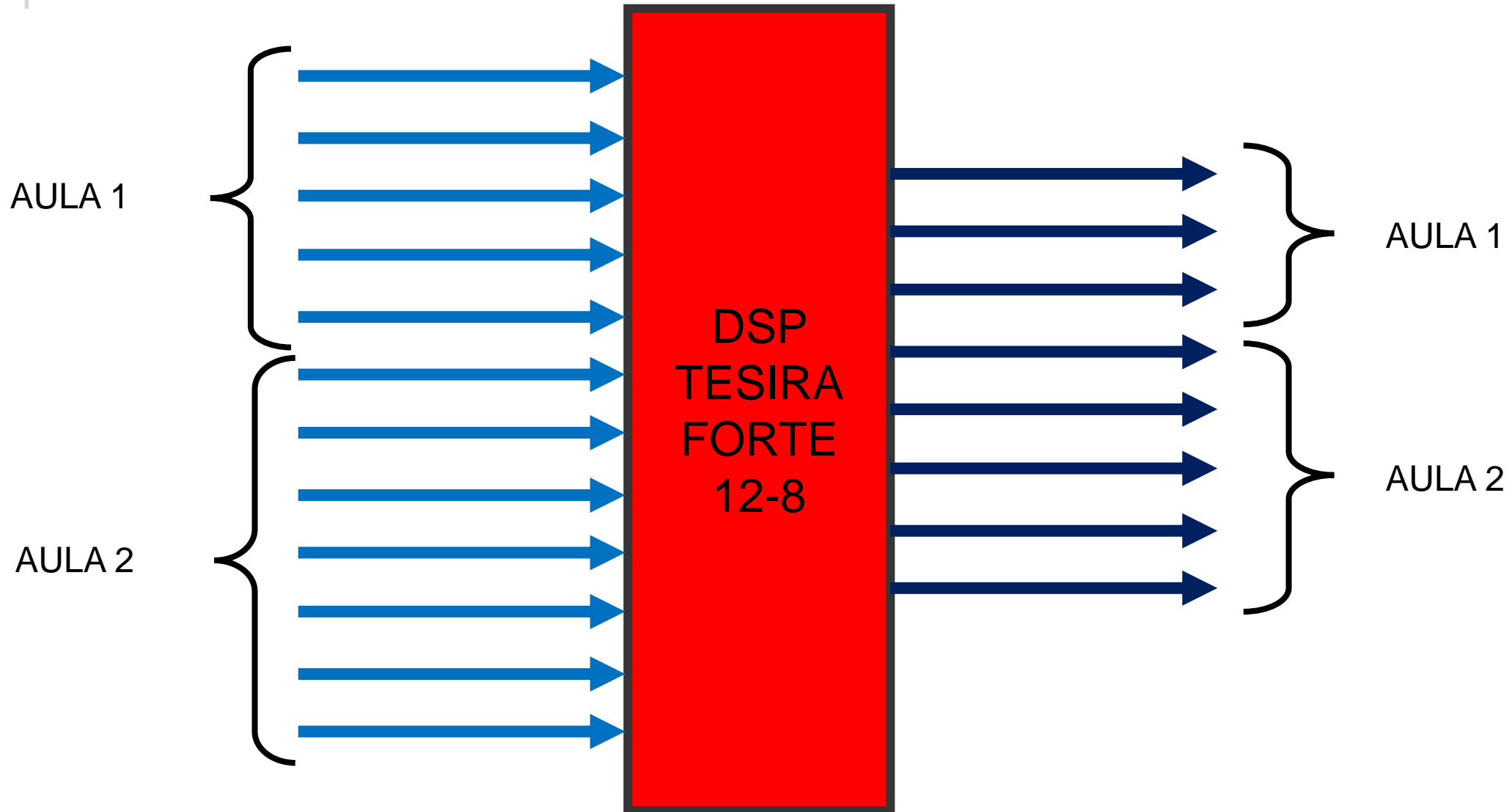


# BIAMP TESIRA

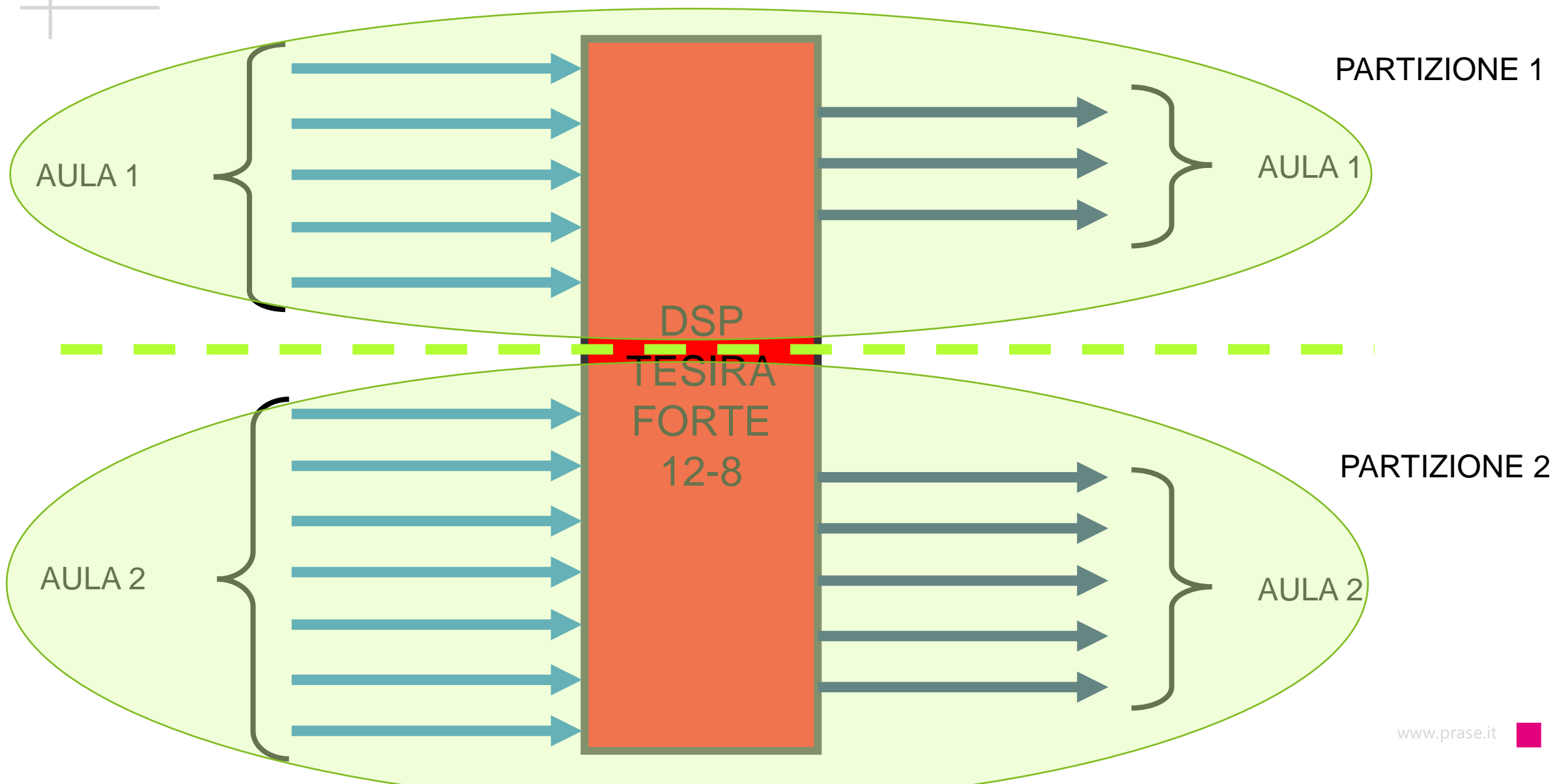
La Famiglia TESIRA



# Cos'è una Partizione - Sistema



# Cos'è una Partizione - Sistema

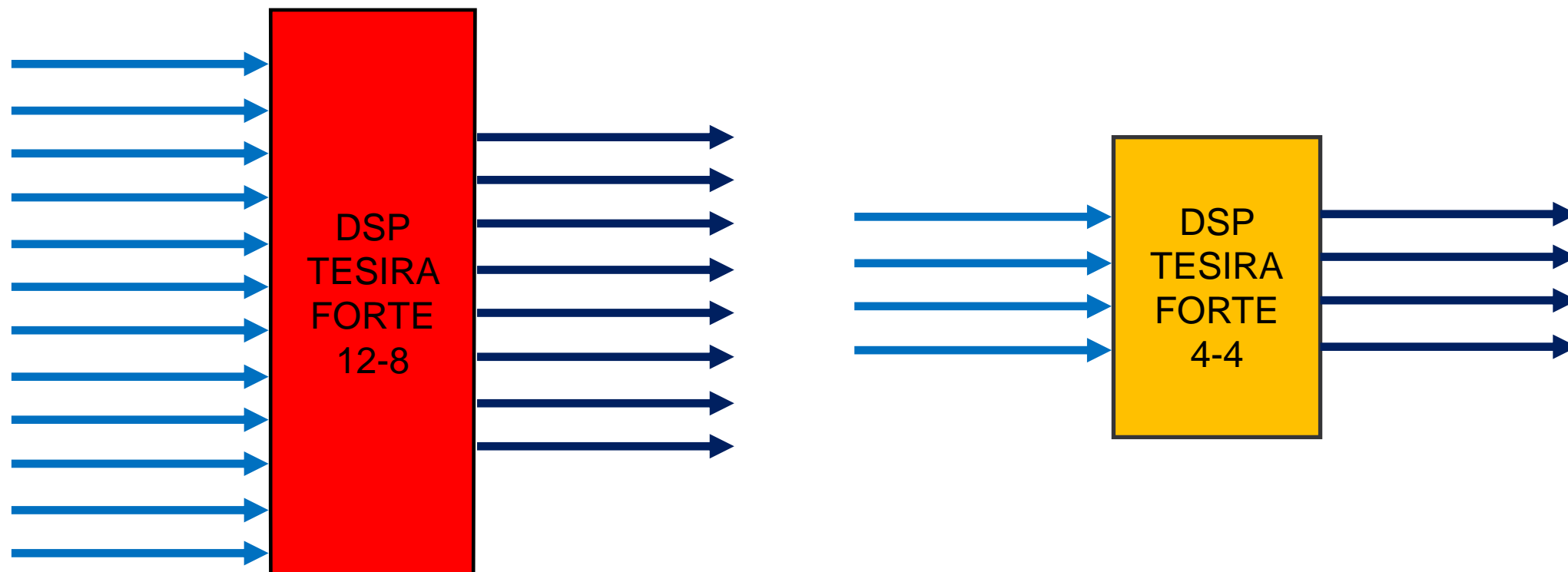


# + Benefici di una Partizione

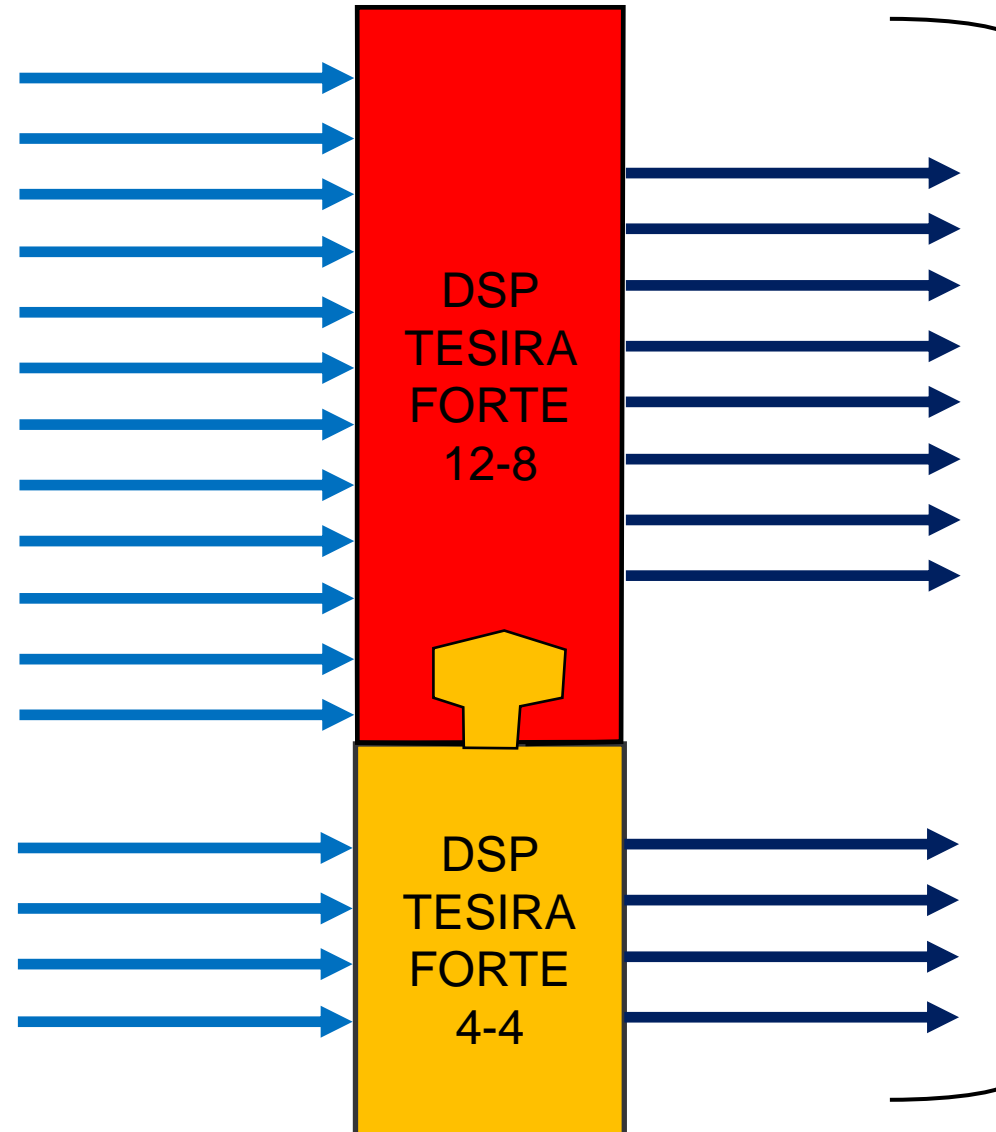
- Migliore suddivisione delle risorse DSP
- Manutenzione su una partizione senza Fermare l'altra partizione
- Chiara suddivisione del layout
- Ottimizzazione del sistema
- Connessione-accesso Dedicato alla partizione



# Cos'è una Partizione - Sistema



# Cos'è una Partizione - Sistema



- Le due unità sono viste come UNICA ENTITA'
- RISORSE DEL DSP condivise
- Dislocazione dispositivi VICINI – LONTANI
- AUTOMATISMO sulle connessioni – AVB
- Ottimizzazione dislocazione Risorse





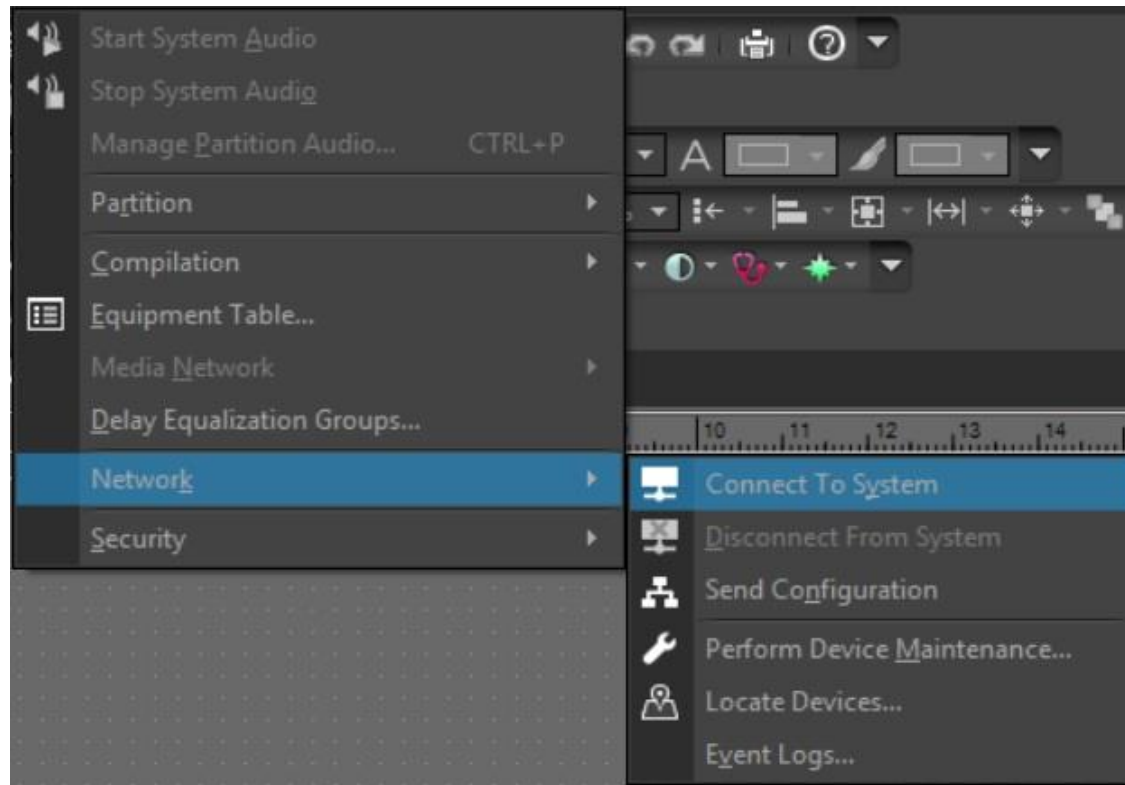
# Benefici di un Sistema con più DSP

- Unità vicino alle utenze
- Facile Visione d'insieme di tutto il sistema
- Facile interscambio di segnali audio
- Migliore sfruttamento delle risorse
  - In Combinazione alle Partizioni
  - Utilizzo del DSP di un altro dispositivo



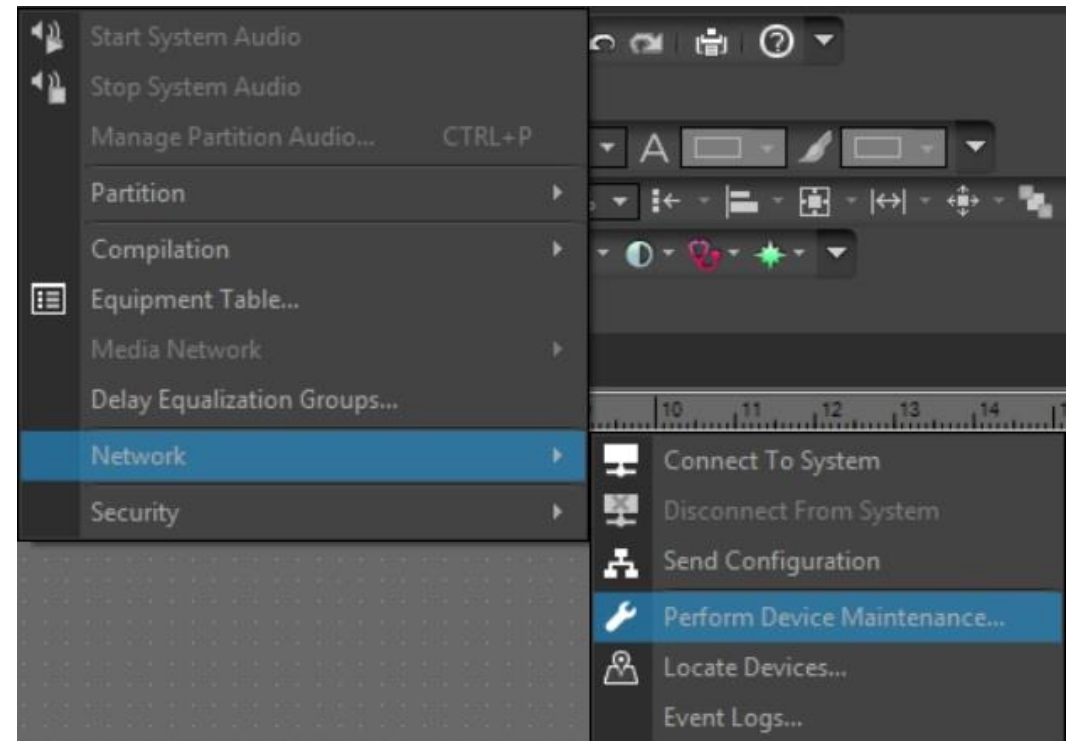
# Software

- La rete: menu System - Network



# Software

- La manutenzione: menu System – Network – Perform Device Maintenance



# Software

Device Maintenance

System List

System ID	System Description	Device Count	Audio	Status
▶	All Devices	7	N/A	🔴
🔌 03384492	Untitled 12	1	On	🟢
🔌 03219017	Demo TLUX	1	On	🔴
🔌 03174876	TesiraFORTÉ AVB-AI - Default Configuration 03174876	1	On	🟢

Device List

Serial Number	Host Name	Device ID	Device Description	System ID	System Description	Audio	Status
▶ 02454949	TesiraForte02454949	0	Fortè AVB VI gruppo 1			N/A	🟢
02965513	TesiraForte02965513	0	Fortè AVB TI gruppo 4			N/A	🟢
03003908	TesiraForte03003908	0	Fortè AVB TI gruppo 5			N/A	🟢
03178507	TesiraForte03178507	0	Fortè AVB CI gruppo 2			N/A	🟢
03384492	TesiraForte03384492	1	Fortè AVB AI gruppo 6	03384492	Untitled 12	On	🟢
02840405	TesiraForte02840405	5	Fortè AVB VI di LUCA	03219017	Demo TLUX	On	🔴
03174876	TesiraForte03174876	1		03174876	TesiraFORTÉ AVB-AI - Defa...	On	🟢

Device Information...

Date/Time Settings...

Network Settings...

Hosts Table...

Device Description...

Port Settings...

Security Settings...

Clear Configuration

Update Firmware...

Clear Event Logs

Reboot Device

Locate Devices...

Faults...

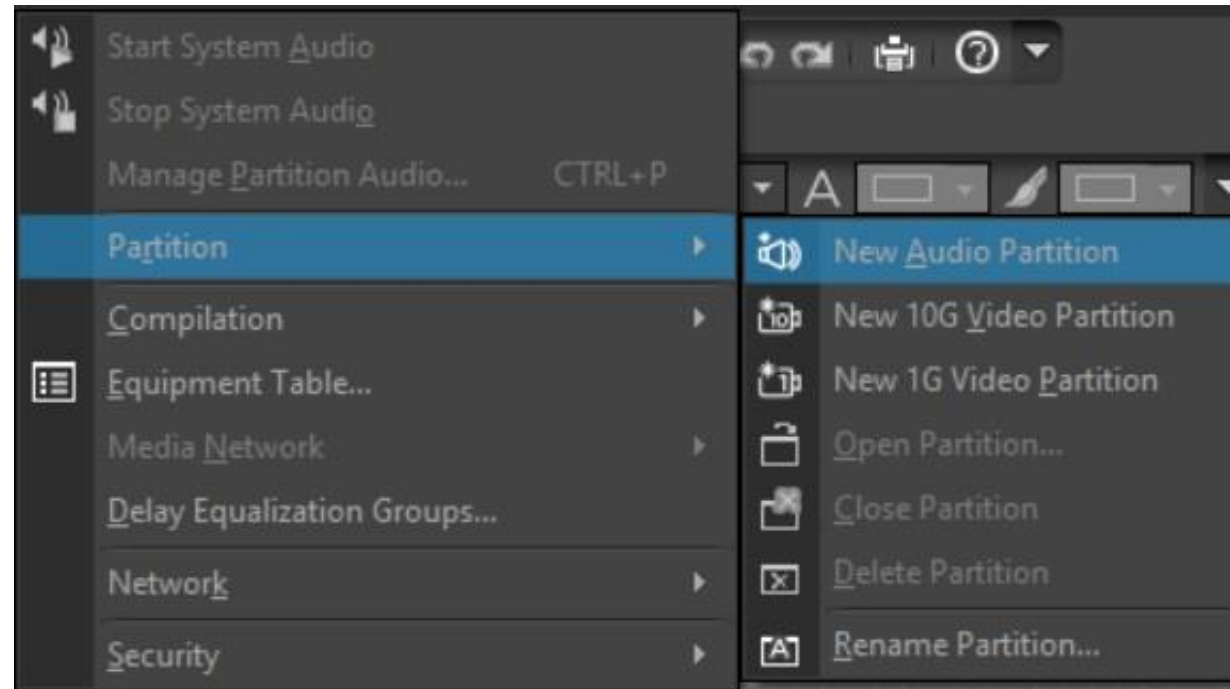
Retrieve Event Logs...

Remote Devices...

Close

# Software

- Le partizioni: menu System - Partition

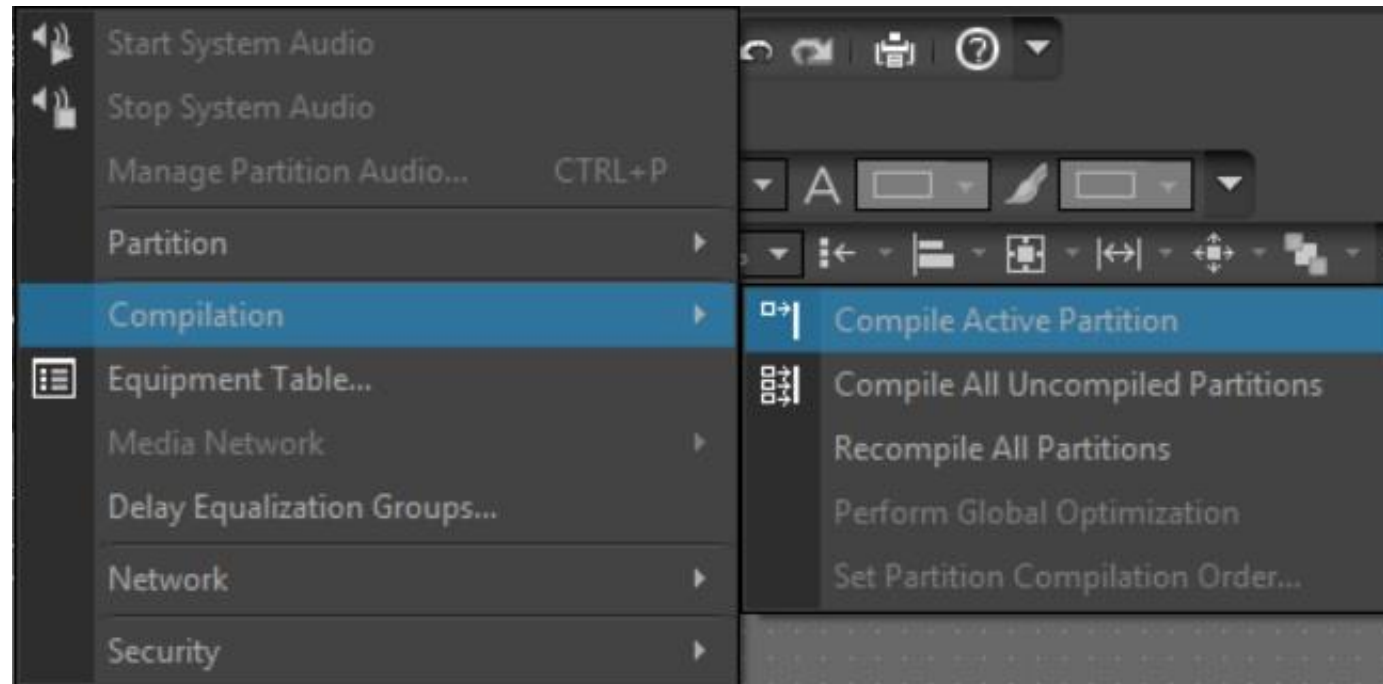


# Software

- Layout minimo:
  - Un ingresso audio
  - Una uscita audio

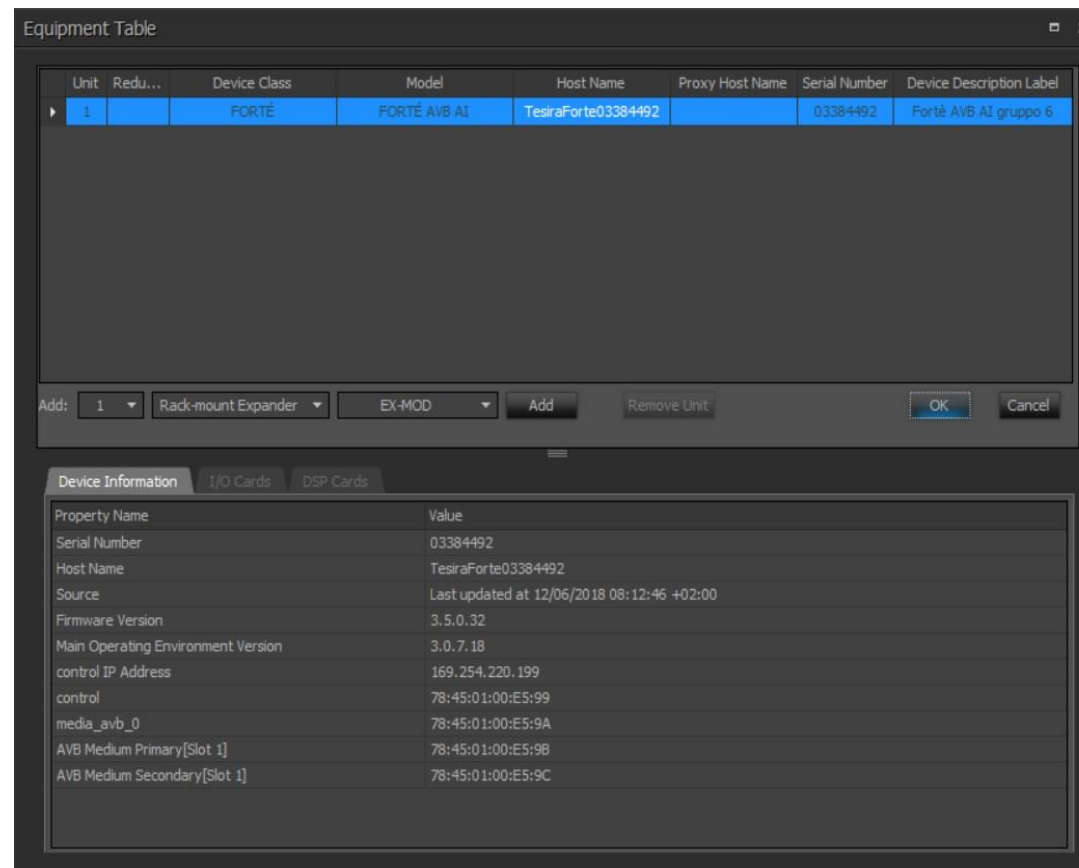
# Software

- La Compilazione: menu System - Compile



# Software

- L'Equipment Table: menu System



The screenshot displays the 'Equipment Table' window. At the top, there is a table with the following columns: Unit, Redu..., Device Class, Model, Host Name, Proxy Host Name, Serial Number, and Device Description Label. A single row is visible, highlighted in blue, with the following values: Unit: 1, Redu...: (empty), Device Class: FORTÉ, Model: FORTÉ AVB A1, Host Name: TesiraForte03384492, Proxy Host Name: (empty), Serial Number: 03384492, and Device Description Label: Forté AVB A1 gruppo 6.

Below the table, there are several controls: 'Add: 1', a dropdown menu for 'Rack-mount Expander', a dropdown menu for 'EX-MOD', an 'Add' button, a 'Remove Unit' button, and 'OK' and 'Cancel' buttons.

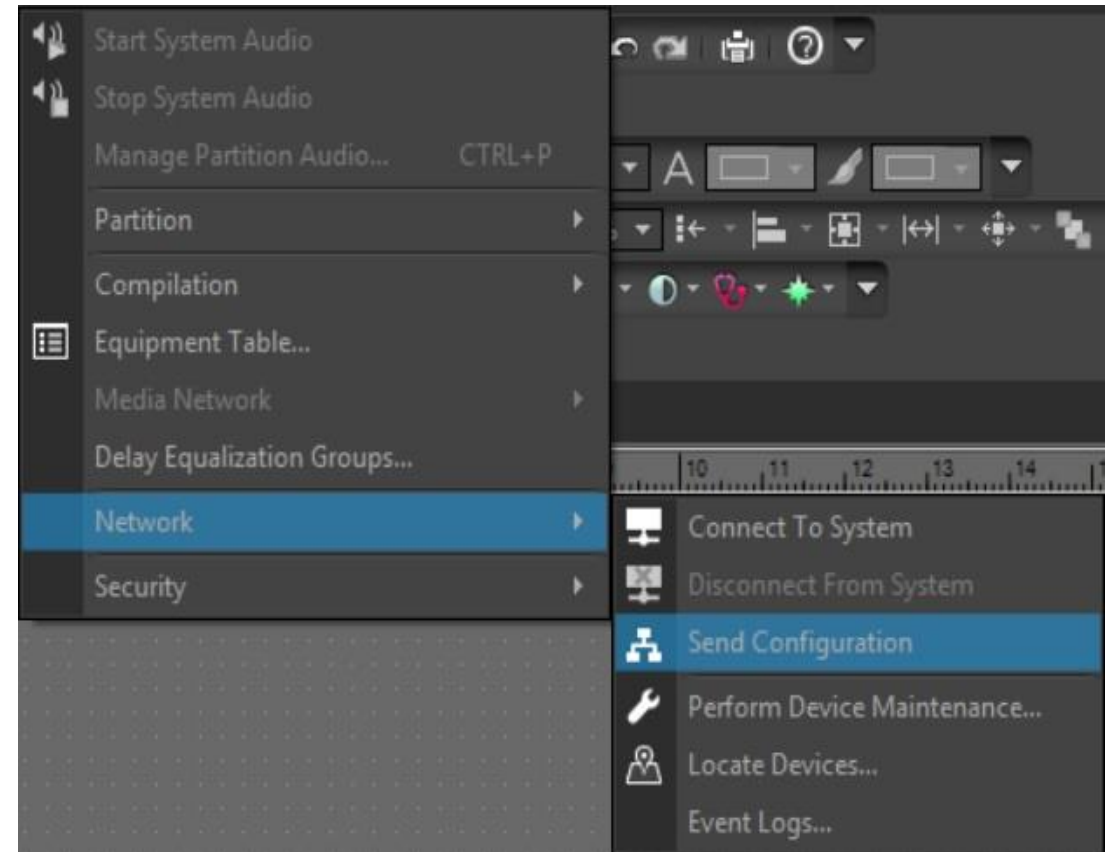
At the bottom, there is a 'Device Information' panel with tabs for 'I/O Cards' and 'DSP Cards'. The 'Device Information' tab is active, showing a list of properties and their values:

Property Name	Value
Serial Number	03384492
Host Name	TesiraForte03384492
Source	Last updated at 12/06/20 18 08:12:46 +02:00
Firmware Version	3.5.0.32
Main Operating Environment Version	3.0.7.18
control IP Address	169.254.220.199
control	78:45:01:00:E5:99
media_avb_0	78:45:01:00:E5:9A
AVB Medium Primary[Slot 1]	78:45:01:00:E5:9B
AVB Medium Secondary[Slot 1]	78:45:01:00:E5:9C

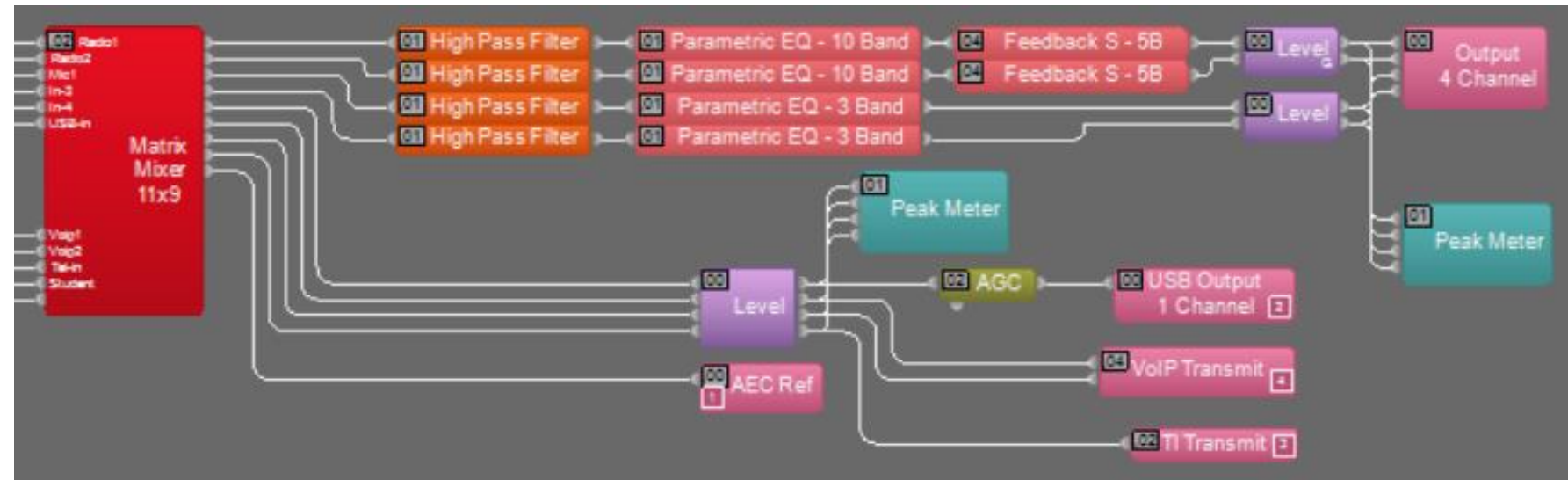
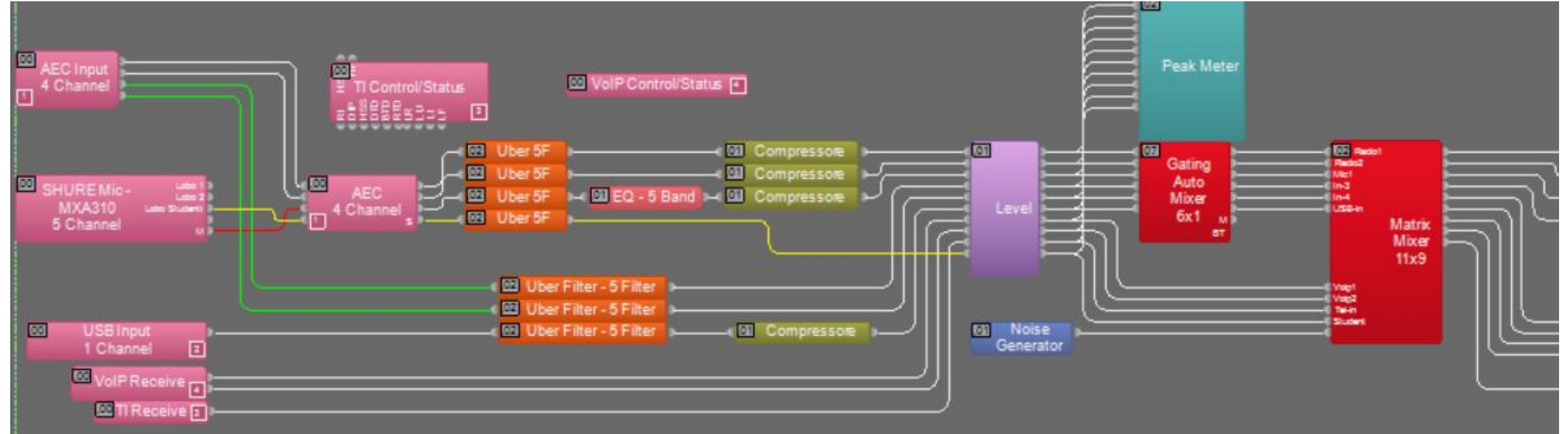


# Software

- Invio Configurazione: menu System - Network  
– Send Configuration



# Layout



# TTP – controllo da terze parti

[https://support.biamp.com/Tesira/Control/Tesira\\_command\\_string\\_calculator](https://support.biamp.com/Tesira/Control/Tesira_command_string_calculator)

# TTP – controllo da terze parti

## Tesira command string calculator

Last updated: Apr 19, 2018

 Save as PDF

[Home](#) > [Tesira](#) > [Control](#) > [Tesira command string calculator](#)

This tool can be used to generate command strings to control Tesira products. Fill in the appropriate information in the prompts below to get started. All commands must be terminated with a "line feed" character (ASCII hex value 0A).

What type of block would you like to control?

Level Control ▾

Which attribute within that block would you like to control?

Level ▾

Which action would you like to perform?

set ▾

Which channel of that block would you like to control?

3

What value would you like to set this attribute to?

-12

What is the instance tag of this block?

Level1

Calculate

Reset

# CANVAS



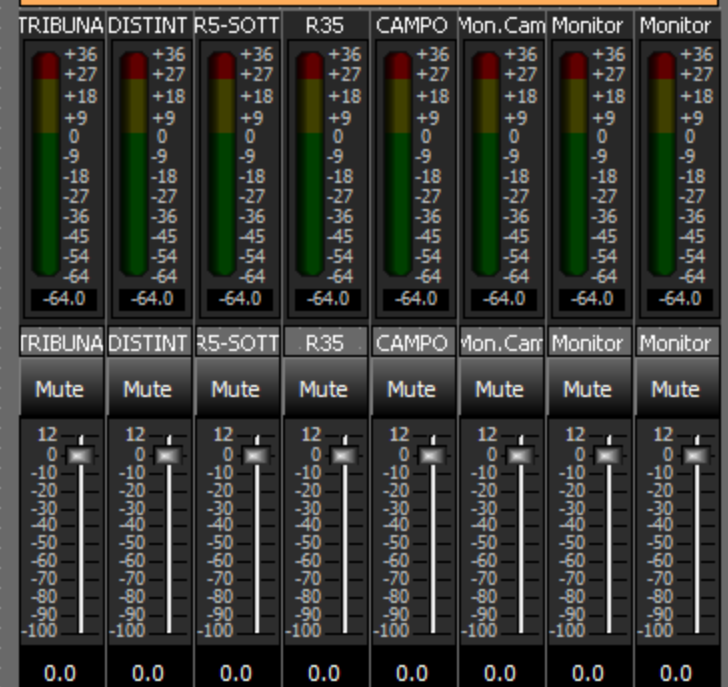
### INGRESSI REGIA



### INGRESSI IN CAMPO



### MASTER USCITE



MAIN  
INPUT

RACK 1  
out

Rack 2  
Out

Rack 3  
Out

Rack 4  
Out

Rack 5-6  
Out

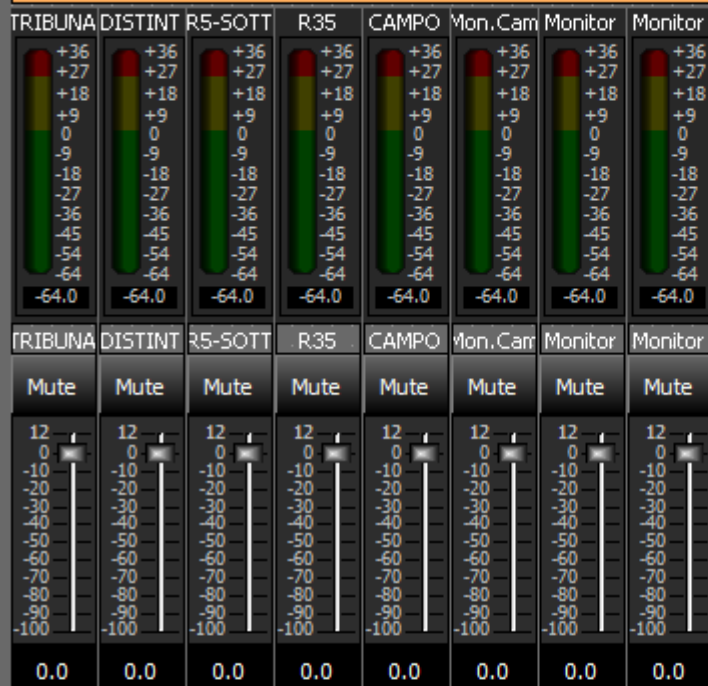
MATRIX

RACK  
INPUT

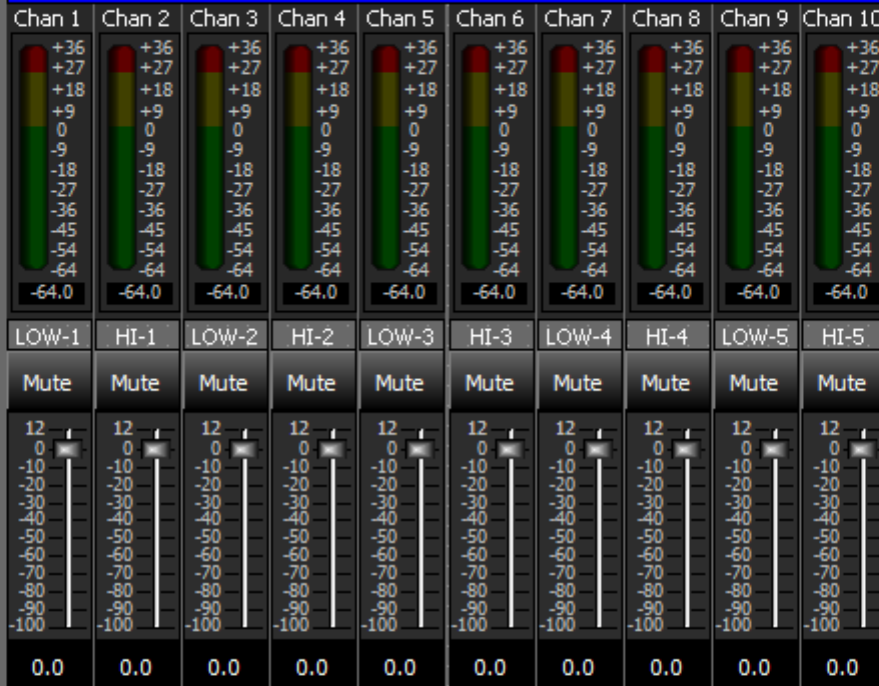
STATUS

EXIT

MASTER USCITE



USCITE RACK 3 TRIBUNA



USCITE RACK 3 CAMPO



MAIN  
INPUT

RACK 1  
out

Rack 2  
Out

Rack 3  
Out

Rack 4  
Out

Rack 5-6  
Out

MATRIX

RACK  
INPUT

STATUS

EXIT

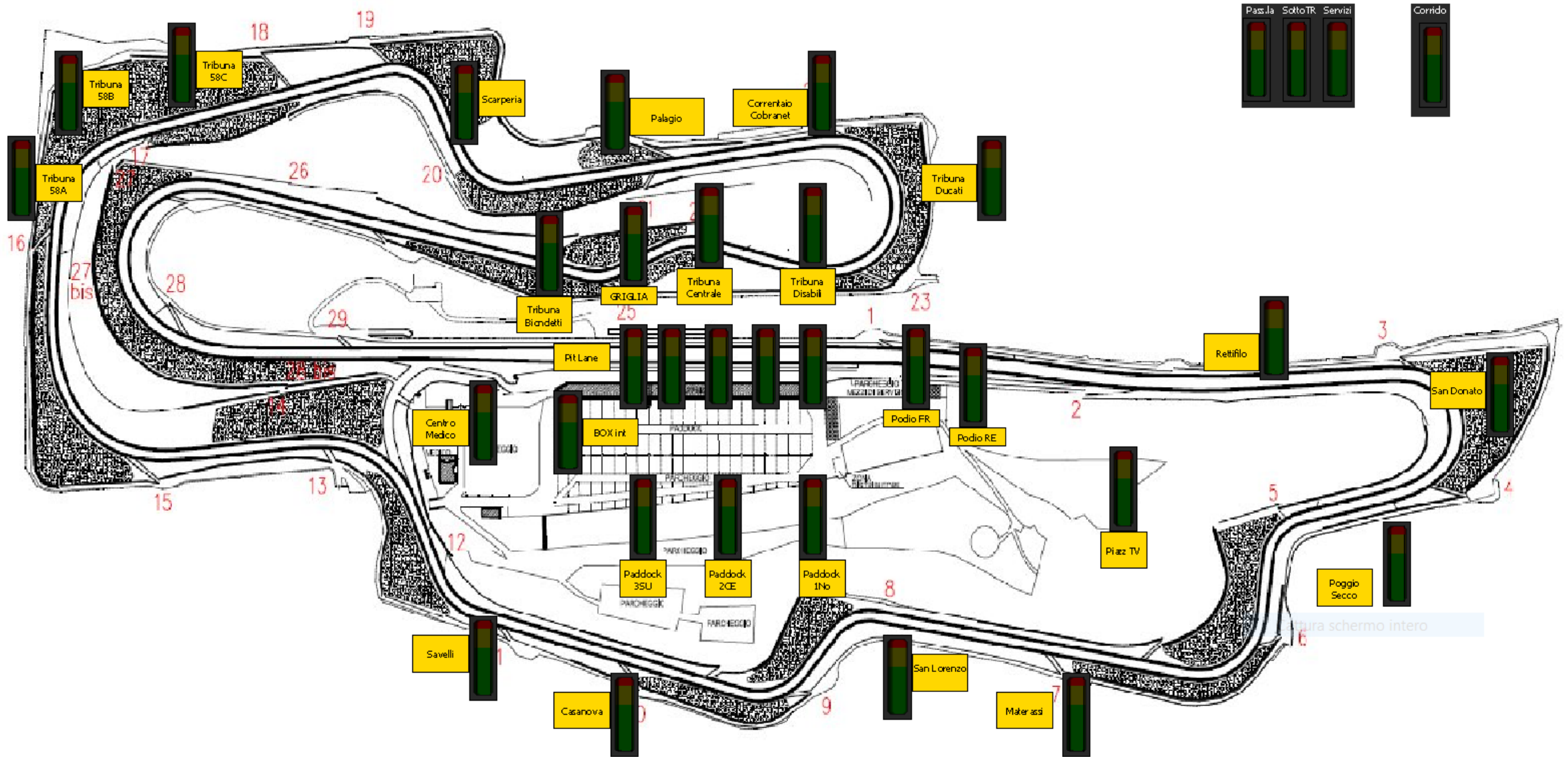
	CH	Bus	
		19	20
INGRESSI RACK 2	1		
	2		
	3		
	4		
INGRESSI RACK 3	5		
	6		
	7		
	8		
INGRESSI RACK 4	9		
	10		
	11		
	12		
INGRESSI RACK 5	13		
	14		
	15		
	16		
INGRESSI RACK 6	17		
	18		
	19		
	20		

	TRIBUNA	DISTINT	R5-SOTT	R35	CAMPO	Mon. Carr	Monitor	Monitor
	Mute	Mute	Mute	Mute	Mute	Mute	Mute	Mute
	12 0 -10 -20 -30 -40 -50 -60 -70 -80 -90 -100	12 0 -10 -20 -30 -40 -50 -60 -70 -80 -90 -100	12 0 -10 -20 -30 -40 -50 -60 -70 -80 -90 -100	12 0 -10 -20 -30 -40 -50 -60 -70 -80 -90 -100	12 0 -10 -20 -30 -40 -50 -60 -70 -80 -90 -100	12 0 -10 -20 -30 -40 -50 -60 -70 -80 -90 -100	12 0 -10 -20 -30 -40 -50 -60 -70 -80 -90 -100	12 0 -10 -20 -30 -40 -50 -60 -70 -80 -90 -100
CH	0.0	0.0	0.0	0.0	0.0	0.0	0.0	0.0
1								
2								
3								
4								
5								
6								
7								
8								
9								
10								
11								
12								
13								
14								
15								
16								
17								
18								
19								
20								

- MAIN INPUT
- RACK 1 out
- Rack 2 Out
- Rack 3 Out
- Rack 4 Out
- Rack 5-6 Out
- MATRIX**
- RACK INPUT
- STATUS

EXIT





atura schermo intero

- FULL W
- FULL S
- EX

VOLUMI USCITE

<b>CORSIA</b> BOX-1, BOX-2, BOX-3, BOX-4, BOX-5 Mute, Mute, Mute, Mute, Mute 0.0, 0.0, 0.0, 0.0, 0.0					<b>GEN. BOX</b> GenCor Mute 0.0	<b>SPKR -&gt;BOX</b> Spk->Box Mute 0.0	<b>BOX-INT</b> BOX-INT Mute 0.0	<b>PODIO</b> PodioFR, PodioRE Mute, Mute 0.0, 0.0	<b>ALLE SALE</b> Sala_ST, SalaVIP Mute, Mute 0.0, 0.0	<b>PALAZZINA</b> Corrido Mute 0.0	<b>PIAZZALI</b> CentrM, Pia_TV, Pad-1NO, Pad-2CE, Pad-3SU Mute, Mute, Mute, Mute, Mute 0.0, 0.0, 0.0, 0.0, 0.0					<b>Generale Paddock</b> Mute 0.0
---------------------------------------------------------------------------------------------------------------	--	--	--	--	------------------------------------------	-----------------------------------------------------	------------------------------------------	------------------------------------------------------------	----------------------------------------------------------------	--------------------------------------------	-------------------------------------------------------------------------------------------------------------------------	--	--	--	--	--------------------------------------------

<b>PISTA</b> Rettifi, S.Donat, PoggioS, M.eras, S.Loren, Casanov, Savelli, Trib58-A, Trib58-B, Trib58-C, Scarper, Palagio, Corrent, Tri-Duc, -, - Mute, Mute, Mute, Mute, Mute, Mute, Mute, Mute, Mute, Mute, Mute, Mute, Mute, Mute, Mute 0.0, 0.0, 0.0, 0.0, 0.0, 0.0, 0.0, 0.0, 0.0, 0.0, 0.0, 0.0, 0.0, 0.0, 0.0															<b>GENER. PISTA</b> Mute 0.0	<b>TRIBUNA</b> Tri-Dis, Griglia, Central, Blondet, Pass.la, SottoTR, Servizi Mute, Mute, Mute, Mute, Mute, Mute 0.0, 0.0, 0.0, 0.0, 0.0, 0.0					
-------------------------------------------------------------------------------------------------------------------------------------------------------------------------------------------------------------------------------------------------------------------------------------------------------------------------------	--	--	--	--	--	--	--	--	--	--	--	--	--	--	----------------------------------------	-------------------------------------------------------------------------------------------------------------------------------------------------------	--	--	--	--	--

VOLUMI USCITE

CORSIA					GEN. BOX	SPKR ->BOX	BOX-INT	PODIO	ALLE SALE	PALAZZINA	PIAZZALI							
BOX-1	BOX-2	BOX-3	BOX-4	BOX-5	GenCor	Spkr->Box	BOX-INT	PodioFR	PodioRE	Sala_ST	SalaVIP	Corrido	Centr oM	Piaz TV	Pad-1NO	Pad-2CE	Pad-3SU	Generale Paddock
Mute	Mute	Mute	Mute	Mute	Mute	Mute	Mute	Mute	Mute	Mute	Mute	Mute	Mute	Mute	Mute	Mute	Mute	Mute
12	12	12	12	12	12	12	12	12	12	12	12	12	12	12	12	12	12	12
0.0	0.0	0.0	0.0	0.0	0.0	0.0	0.0	0.0	0.0	0.0	0.0	0.0	0.0	0.0	0.0	0.0	0.0	0.0

PISTA														GENER. PISTA	TRIBUNA								
Rettif	S.Donat	PoggioS	Materas	S.Loren	Casanov	Savelli	TRI58-A	TRI58-B	TRI58-C	Scarper	Palagio	Corrent	TRI-Duc	-	-	Tri-Dis	Griglia	Central	Biondet	Pass.la	SottoTR	Servizi	
Mute	Mute	Mute	Mute	Mute	Mute	Mute	Mute	Mute	Mute	Mute	Mute	Mute	Mute	Mute	Mute	Mute	Mute	Mute	Mute	Mute	Mute	Mute	Mute
12	12	12	12	12	12	12	12	12	12	12	12	12	12	12	12	12	12	12	12	12	12	12	12
0.0	0.0	0.0	0.0	0.0	0.0	0.0	0.0	0.0	0.0	0.0	0.0	0.0	0.0	0.0	0.0	0.0	0.0	0.0	0.0	0.0	0.0	0.0	0.0

# CANVAS

## Tools-Options

Options

General | Display | **Auto-Connect** | Network

Enable Auto Connect  
 Auto-connect when -AC specified on command line  
 Auto-connect on launch Add Shortcut

Auto-Connect Override Password:

System Connection Settings

ID:  Username:

Use Local Control Surface

Application startup mode

Use Surface setting  Full Screen  Full Window

Disable Window's Application Task Switching

Use Surface settings  Use settings below

Task Keys  Task Bar  Task Manager

System Disconnect Action

Exit to application  
 Exit to Windows Desktop  
 Logout of Windows  
 Shutdown Windows

Connection Failure Action

Exit to application  
 Exit to Windows Desktop  
 Logout of Windows  
 Shutdown Windows

Connection Failure Message:

Startup Delay:  sec

OK Annulla Applica