

ANATOMY.TV – FUNCTIONAL ANATOMY AND THERAPY

... un percorso semplificato

In **Welcome to Anatomy.tv!**

QUICK TIP
Set your preference here.

Got it

a cura di Luisa Banzato

ultimo aggiornamento marzo 2022

PRIMAL PICTURES



Primal Pictures is available
at your institution

ASK YOUR LIBRARY OR LEARNING
RESOURCE TEAM FOR ACCESS DETAILS

www.primalpictures.com



ANATOMY.TV
POWERED BY PRIMAL PICTURES

an informa b

Functional Anatomy and Therapy



ogni sessione



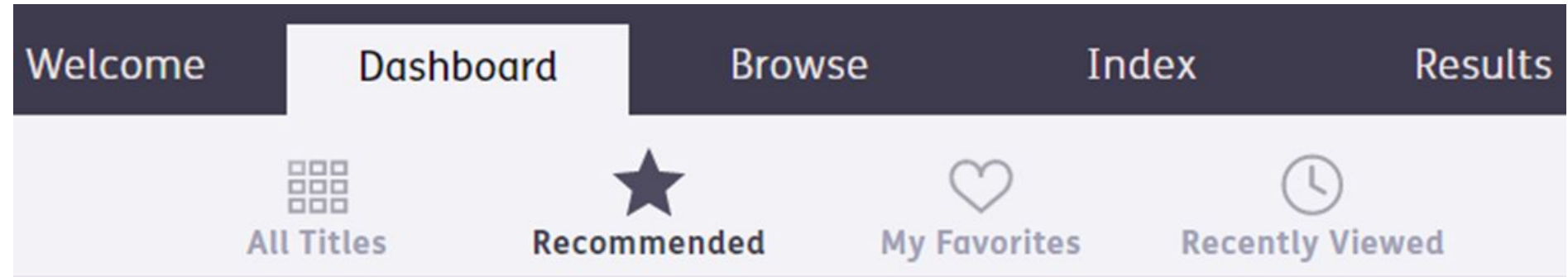
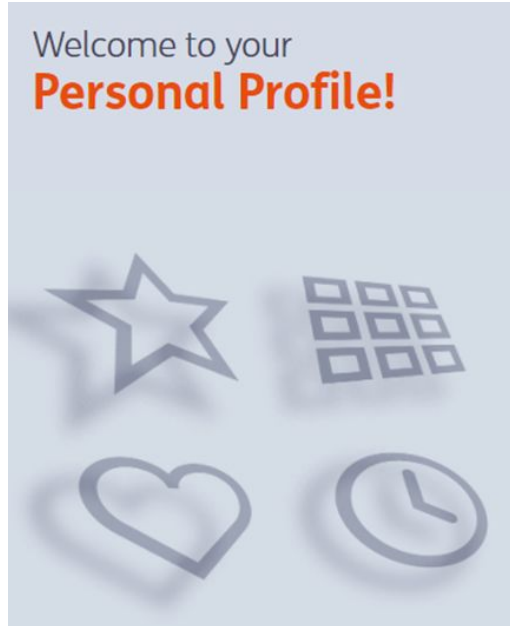
Functional Anatomy and Therapy



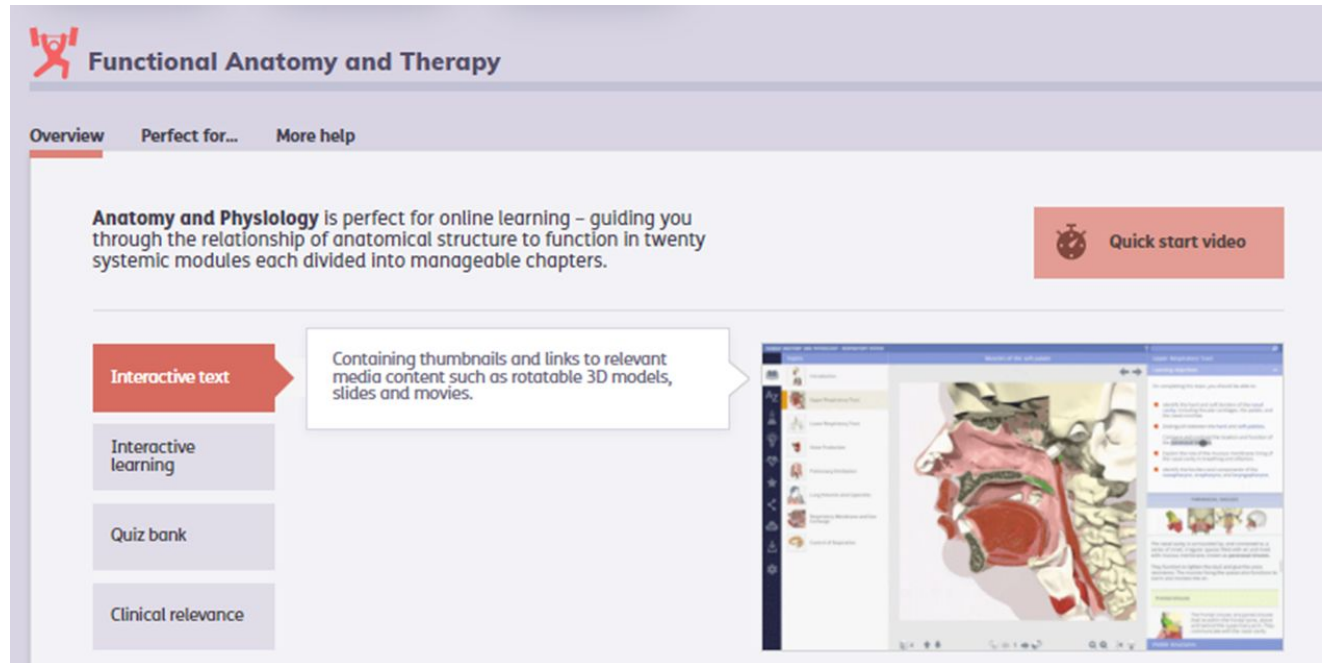
Functional Anatomy

Creare il proprio profilo

E' possibile creare un account per organizzare delle cartelle personalizzate, dei moduli preferiti e vedere la cronologia di navigazione.



Functional Anatomy and Therapy

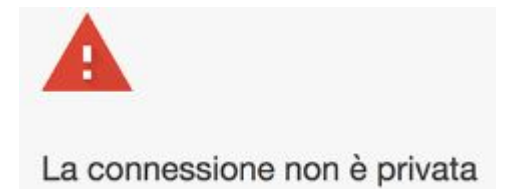


Selezionando la



si attiverà un box di guide ed ulteriori informazioni

Funzionalità browser



Se appaiono questi messaggi la risorsa non viene consultata in modo corretto.

Cancellare i dati di navigazione
(la cronologia, i cookie, immagini nella cache etc.)

Settings

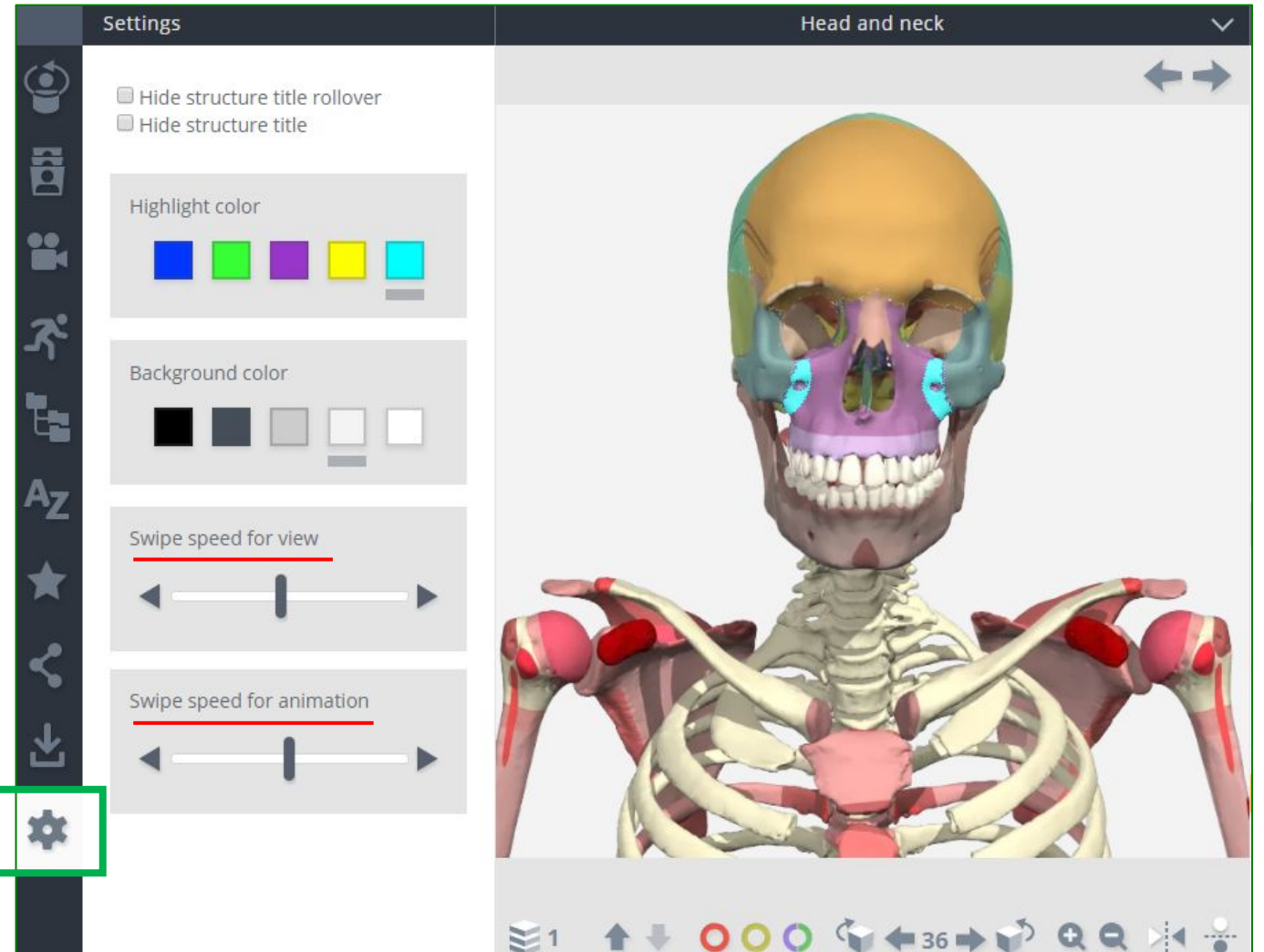


Scegli il colore con il quale vuoi evidenziare la parte.

Scegli lo sfondo.

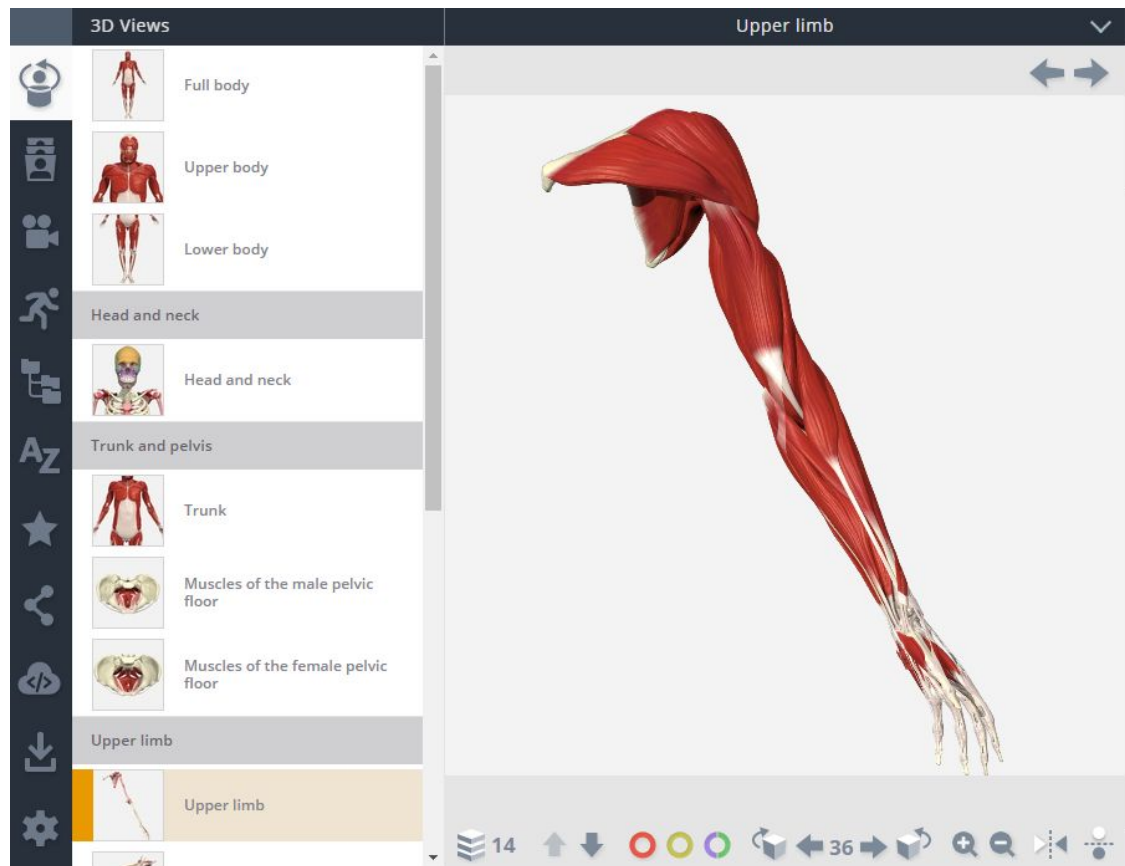


Qui puoi settare la velocità del movimento delle animazioni.

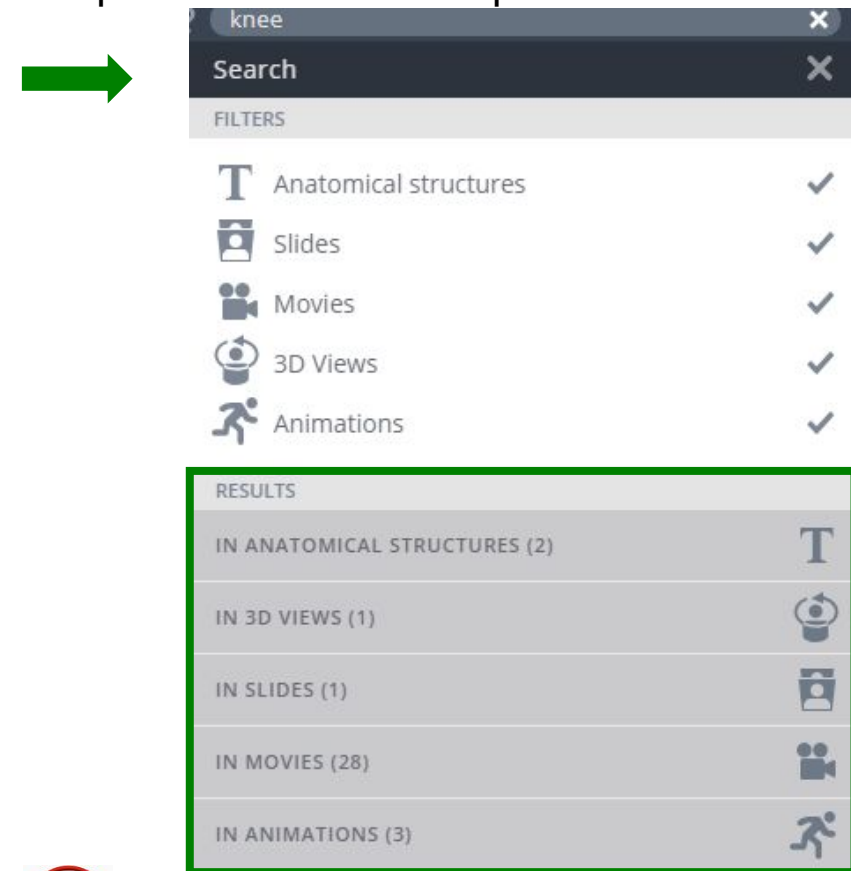


Modalità di ricerca

Pannello di scorrimento - cliccando sulla parte interessata si aprirà un menù con tutte le opzioni disponibili.



Termine libero - in alto sulla destra si apriranno tutte le voci presenti nell'atlante - Results

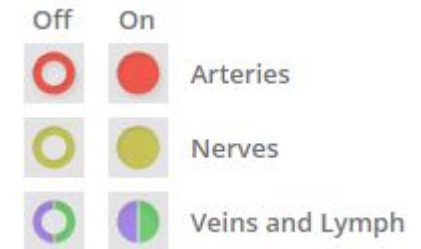
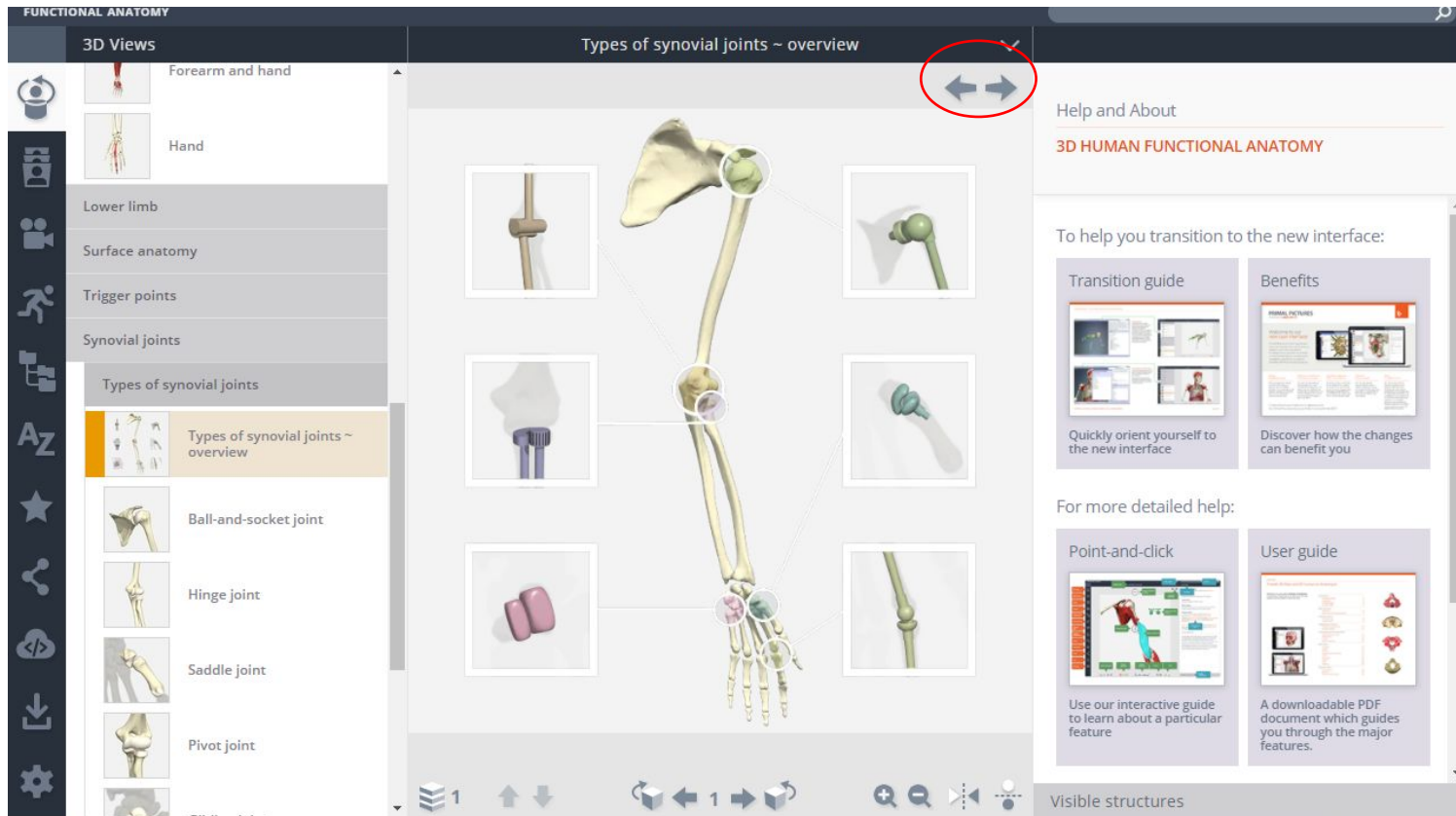


Funzione molto utile per centrare subito l'obiettivo.

Primi tasti funzionali

Selezionando una parte anatomica si apre a destra un testo con **termini interattivi**.

Nella parte bassa dell'immagine tridimensionale le opzioni di visualizzazione:



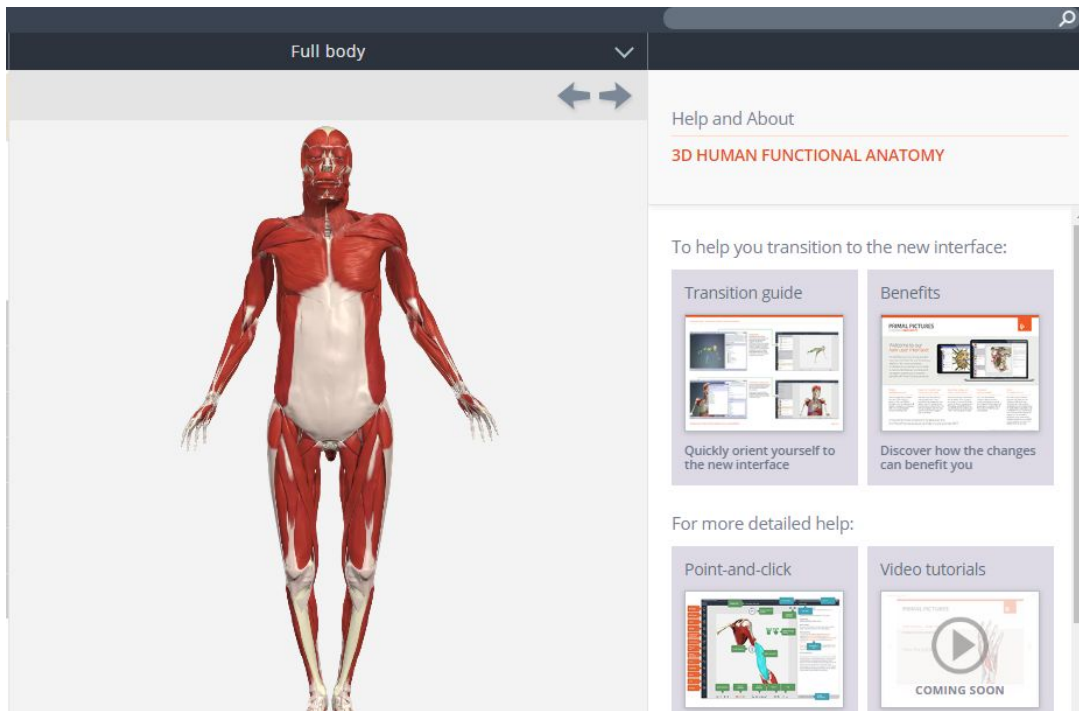
Per seguire il proprio processo di analisi usare le **frecce** per non perdersi tra le molte opzioni.

Rimane molto nascosta la barra **Visible structures** in basso dove si trovano tutte le voci. Accade di dimenticarsi che sia presente visto che è di colore grigio chiaro.

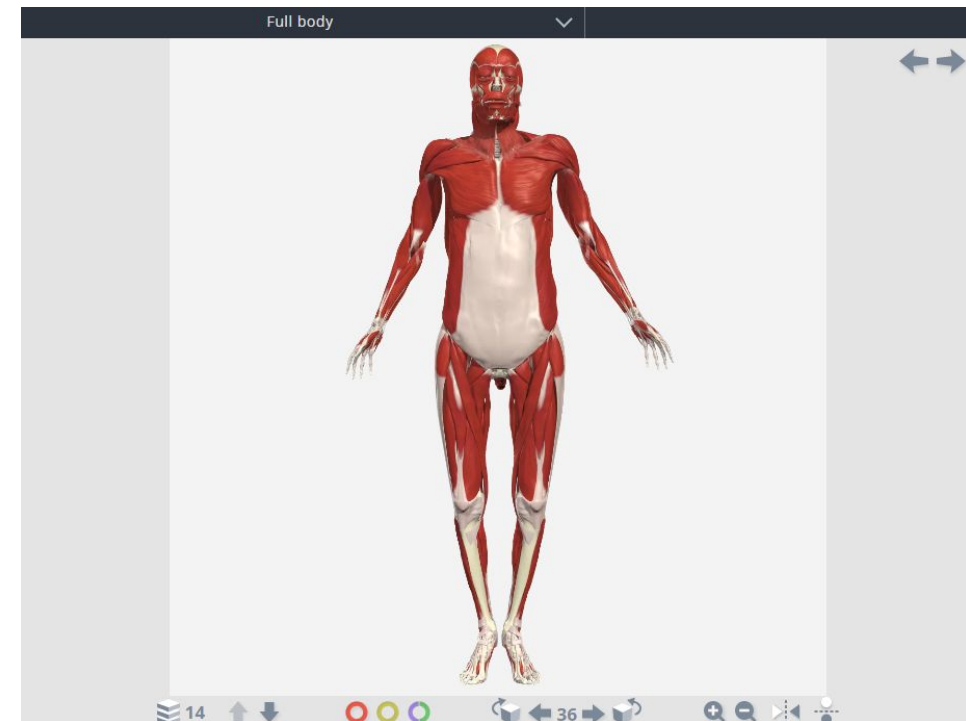


Zoom

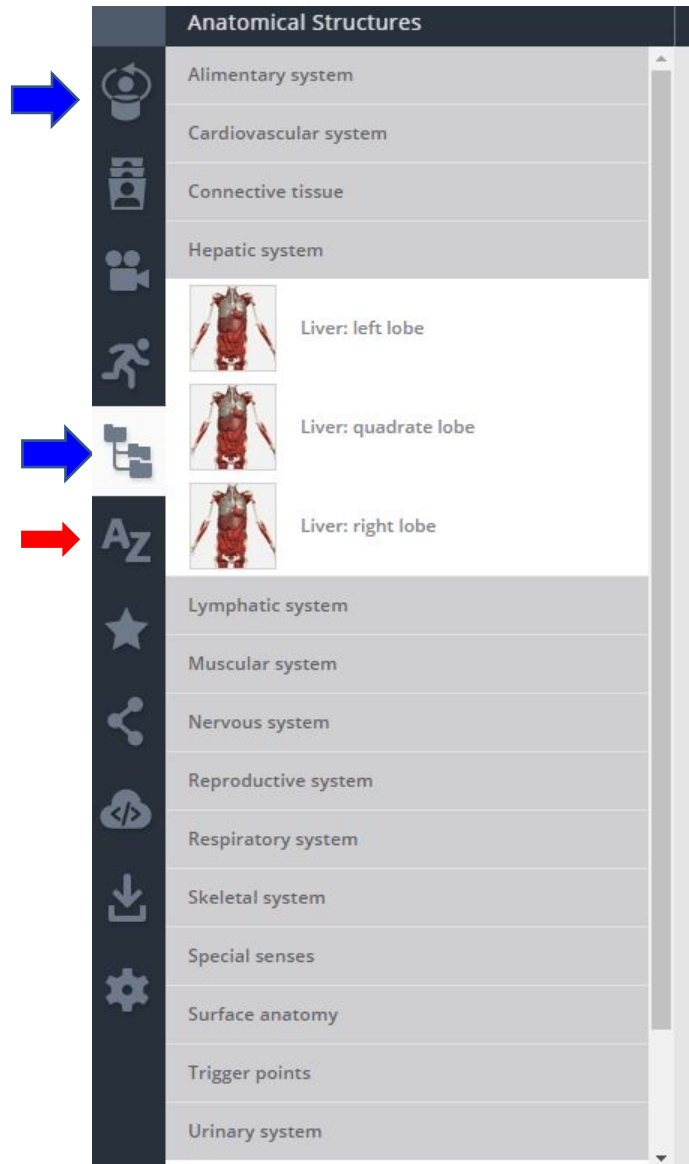
Cliccare sulla barra nera a destra per far scomparire il testo.



Cliccare sulla barra nera a destra per uscire dalla modalità a schermo intero.



Pannello di controllo



Views – si possono scorrere tutti gli elementi del modulo.

Anatomical structures - Si può visualizzare il modulo attraverso l'analisi della struttura anatomica (Alimentary system, Skeletal system etc.).



Esiste anche un indice alfabetico che non rappresenta l'opzione più funzionale per effettuare le ricerche.

Pannello di controllo – Slides - Dissection

The screenshot displays an interactive dissection software interface. On the left is a vertical control panel with icons for navigation and settings. The main area shows a 3D anatomical model of the back of the right upper thigh, with the Semimembranosus muscle highlighted in cyan. A red arrow points from the text description to the muscle's proximal attachment. A purple arrow points from the text to the Adductor magnus muscle. On the right, a text panel provides details about the Semimembranosus muscle, including its proximal and distal attachments, innervation, and blood supply. Below this is a list of visible structures, with Semimembranosus highlighted. A 'TIP' icon and a blue arrow point to the 'Visible structures' list.

Slides

- Dissection slides
- Trigger points

Back of the right upper thigh

Semimembranosus

Proximal attachment
Upper outer quadrant of the posterior surface of the **ischial tuberosity**, deep to the conjoined tendon of the semitendinosus and the long head of biceps femoris.

Distal attachment
The posterior aspect of the medial condyle of tibia, below the joint line, sending fibers into the fascia over popliteus and into the oblique popliteal ligament.

Innervation
Tibial portion of the sciatic nerve (L5, S1, 2).

Blood supply
Branches from the internal iliac, popliteal, and profunda femoris arteries.

Visible structures

- Opening in adductor magnus
- Popliteal artery
- Popliteal vein
- Quadratus femoris
- Sciatic nerve
- Second perforating artery
- Semimembranosus**
- Semitendinosus
- Third perforating artery

Selezionando una parte si attiva il pannello del testo.

Le etichette si evidenziano scorrendo sull'immagine interattiva.

Le immagini e il testo possono essere salvate.

Voci interattive

TIP

Selezionare Visible structures

Pannello di controllo – Slides - Dissection



Slides

Dissection slides

- Foot
- Forearm
- Head and neck
- Hip
 - Back of the right upper thigh
 - Left femoral region, femoral vessels and nerves**
 - Left hip joint, coronal section, from the front
 - Right gluteal region, with most of gluteus maximus removed
- Knee
- Leg
- Pelvis
- Shoulder

Selezionando una parte si attiva il pannello del **testo**.

Le **etichette** si evidenziano scorrendo sull'immagine interattiva.

Left femoral region, femoral vessels and nerves

Sartorius

Sartorius

Proximal attachment
Inferior portion of the **anterior superior iliac spine**.

Distal attachment
Upper medial surface of tibial shaft at the tibial flare, anterior to the attachment of gracilis.

Innervation
Anterior division of the femoral nerve (L3, 4).

Blood supply
Branches from the femoral artery.

Primary actions
Although sartorius may perform several actions, its length and small cross-sectional size makes it more important in assisting other muscles in specific movements rather than being solely capable of primary movements.

Secondary actions
1. Assists with flexion of the thigh at the hip (**Anim**, **Movie**)

Visible structures

- Iliotibial tract overlying vastus lateralis
- Inguinal ligament
- Nerve and vessels to gracilis
- Obturator nerve: anterior branch, nerve to adductor brevis
- Obturator nerve: anterior branch, nerve to adductor longus
- Obturator nerve: anterior branch, nerve to gracilis
- Pectineus

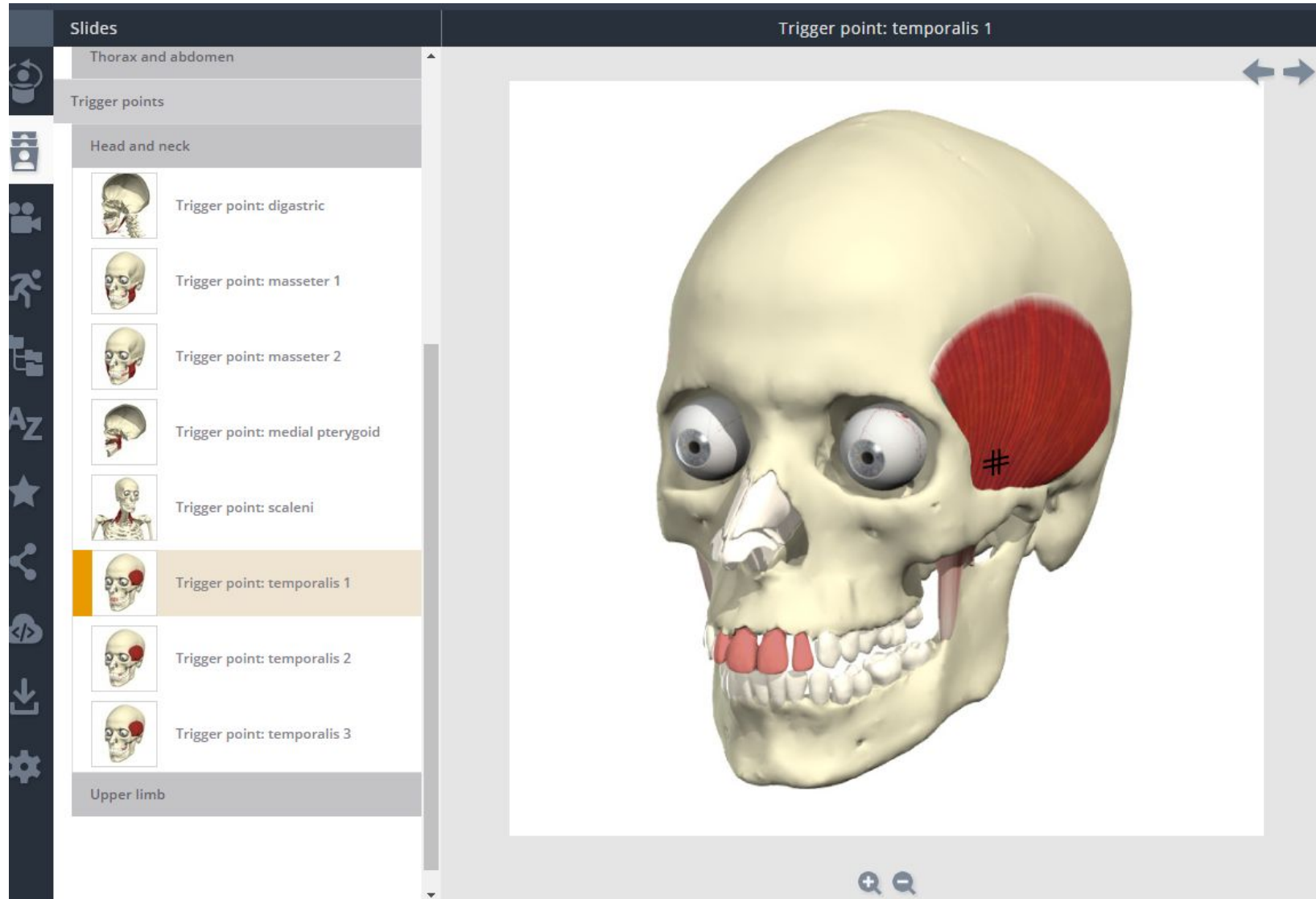
Voci interattive

Selezionare **Visible structures**

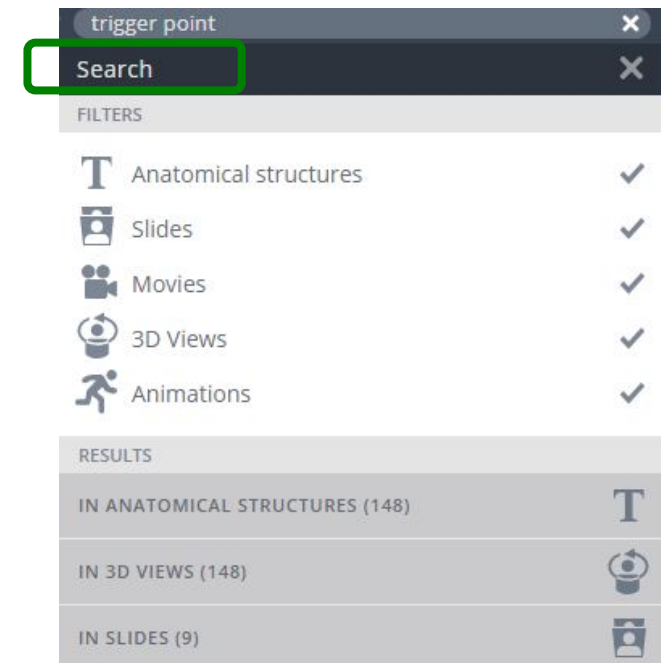


Le immagini e il testo possono essere **salvate**.

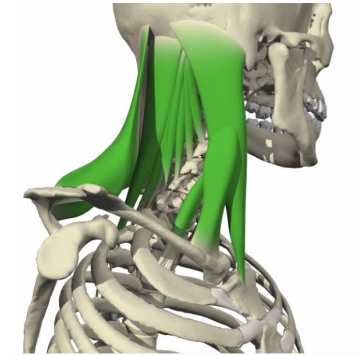
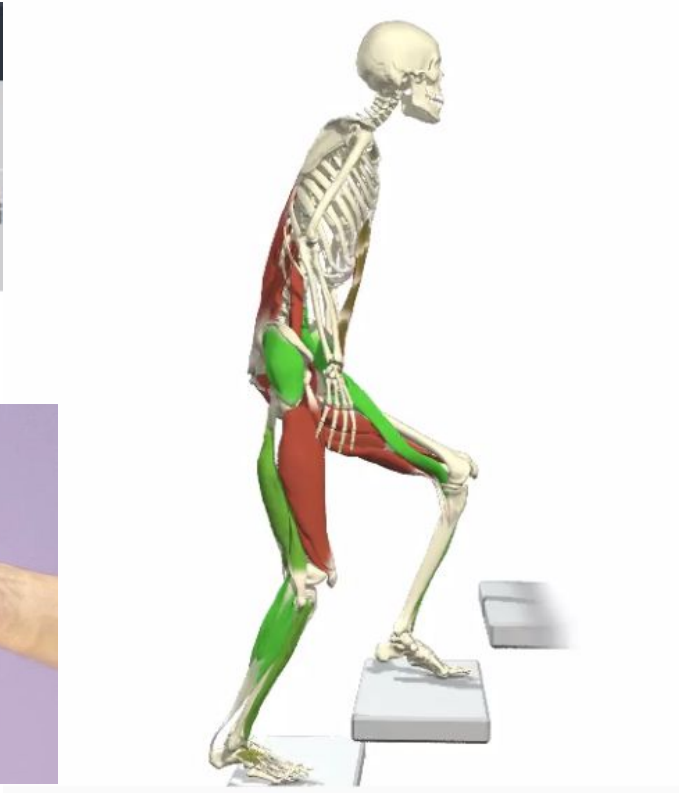
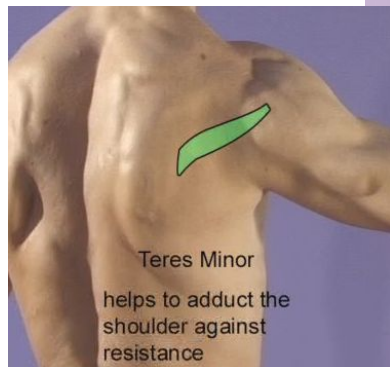
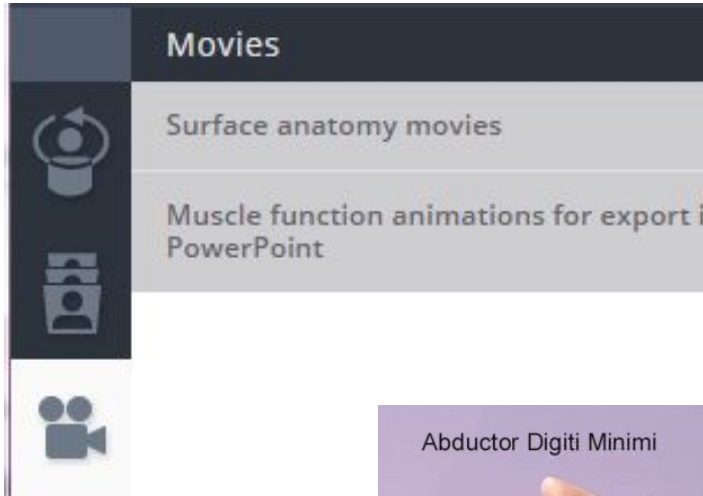
Pannello di controllo – Slides – Trigger points



Per avere una visione complessiva usare **Search** e digitare trigger points.



Pannello di controllo – Movies

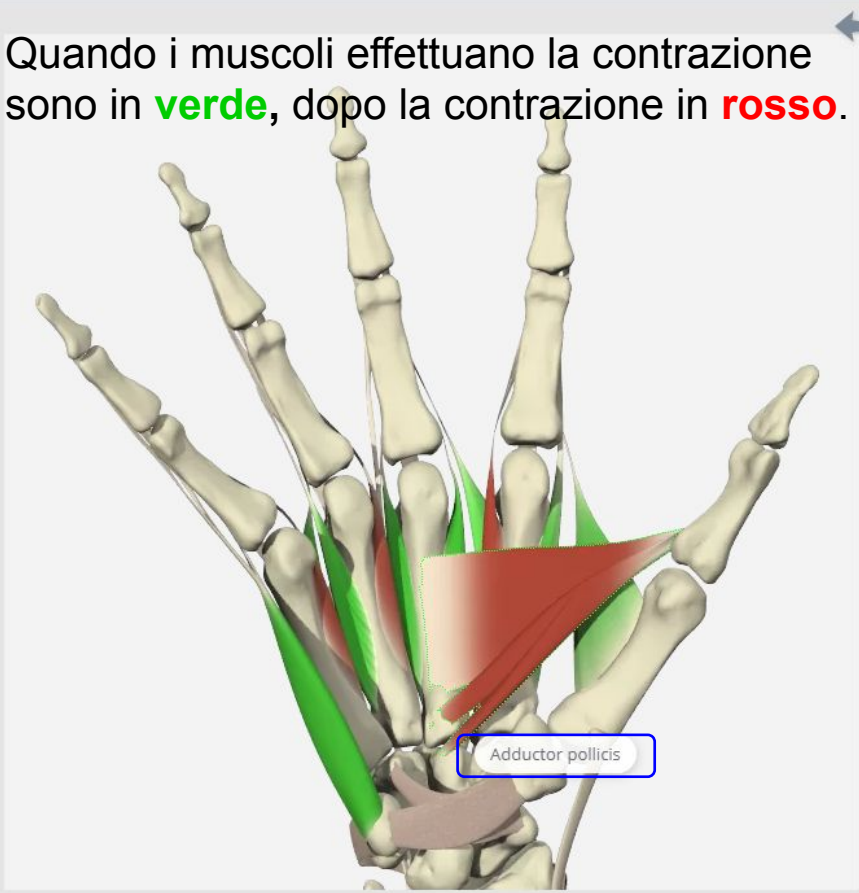


Si possono scaricare e vedere nel proprio PC senza dover essere connessi alla rete.

Pannello di controllo – Animation

Abduction/adduction of the MCP joints with extension/flexion II

Quando i muscoli effettuano la contrazione sono in **verde**, dopo la contrazione in **rosso**.



Adductor pollicis

Sartorius

Proximal attachment
Inferior portion of the **anterior superior iliac spine**.

Distal attachment
Upper medial surface of tibial shaft at the tibial flare, anterior to the attachment of gracilis.

Innervation
Anterior division of the femoral nerve (L3, 4).

Blood supply
Branches from the femoral artery.

Primary actions
Although sartorius may perform several actions, its length and small cross-sectional size makes it more important in assisting other muscles in specific movements rather than being solely capable of primary movements.

Secondary actions

1. Assists with flexion of the thigh at the hip (**Anim, Movie**)
Agonists: **psoas major** and **iliacus**
Antagonists: **gluteus maximus, semitendinosus, semimembranosus, biceps femoris** (long head), and **adductor magnus** (posterior part)

Pectineus, rectus femoris, and psoas minor also assist with flexion of the thigh at the hip. Additionally, **adductor longus** especially assists with the initial stages of flexion from full extension.

2. Assists with external rotation of the thigh at the hip (**Anim, Movie**)
Agonists: **obturator internus, obturator externus, gemellus superior, gemellus inferior, and quadratus femoris**
Antagonists: **tensor fasciae latae, gluteus minimus** (anterior fibers), and **gluteus medius** (anterior fibers)

Piriformis and **gluteus maximus** also assist with external rotation of the thigh at the hip when the hip is extended.

3. Assists with abduction of the thigh at the hip (**Anim, Movie**)

Visible structures

Selezionando una parte apparirà il testo collegato con le **voci interattive**.

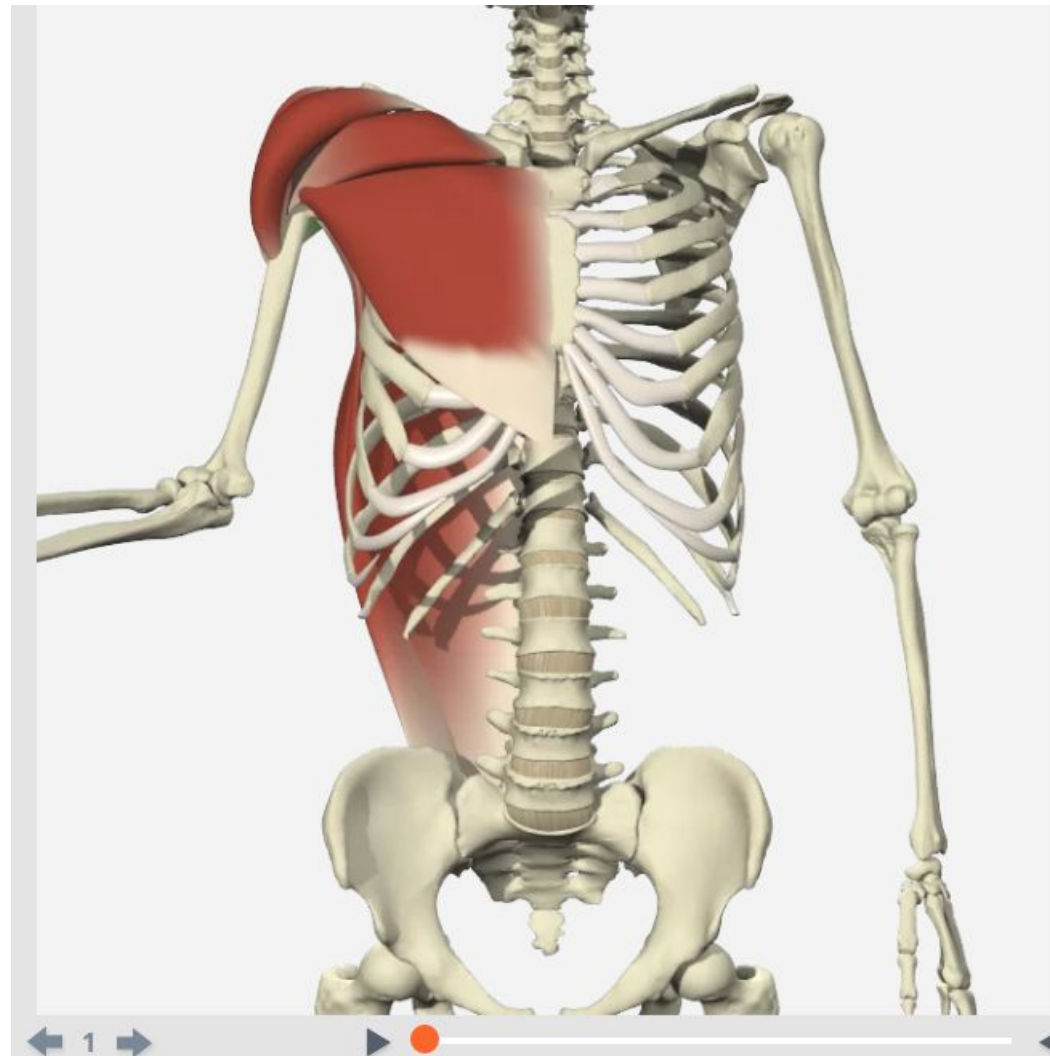
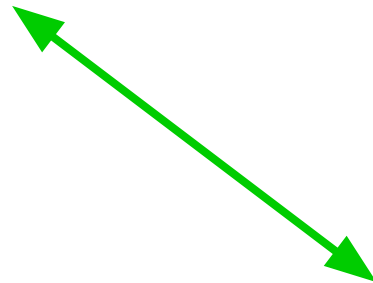
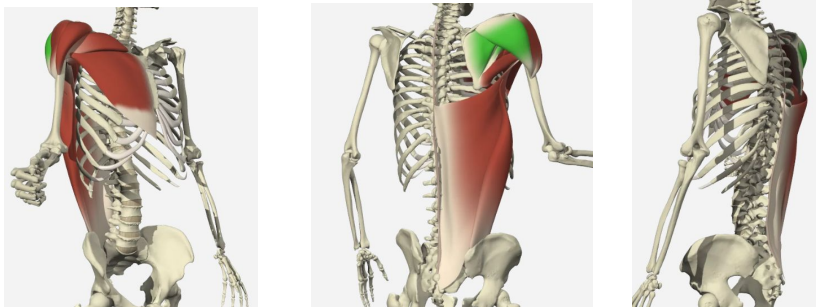
Basta scorrere sull'immagine per vedere le **etichette**.



Ricorda di utilizzare Visible structures

Pannello di controllo – Animation

La rotazione del modello è a 360°

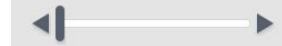


E' possibile rallentare o velocizzare il movimento.

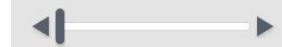
Settings



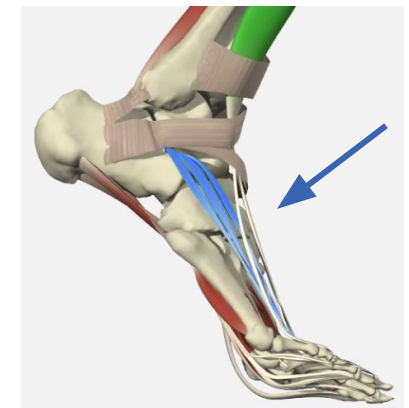
Swipe speed for view



Swipe speed for animation



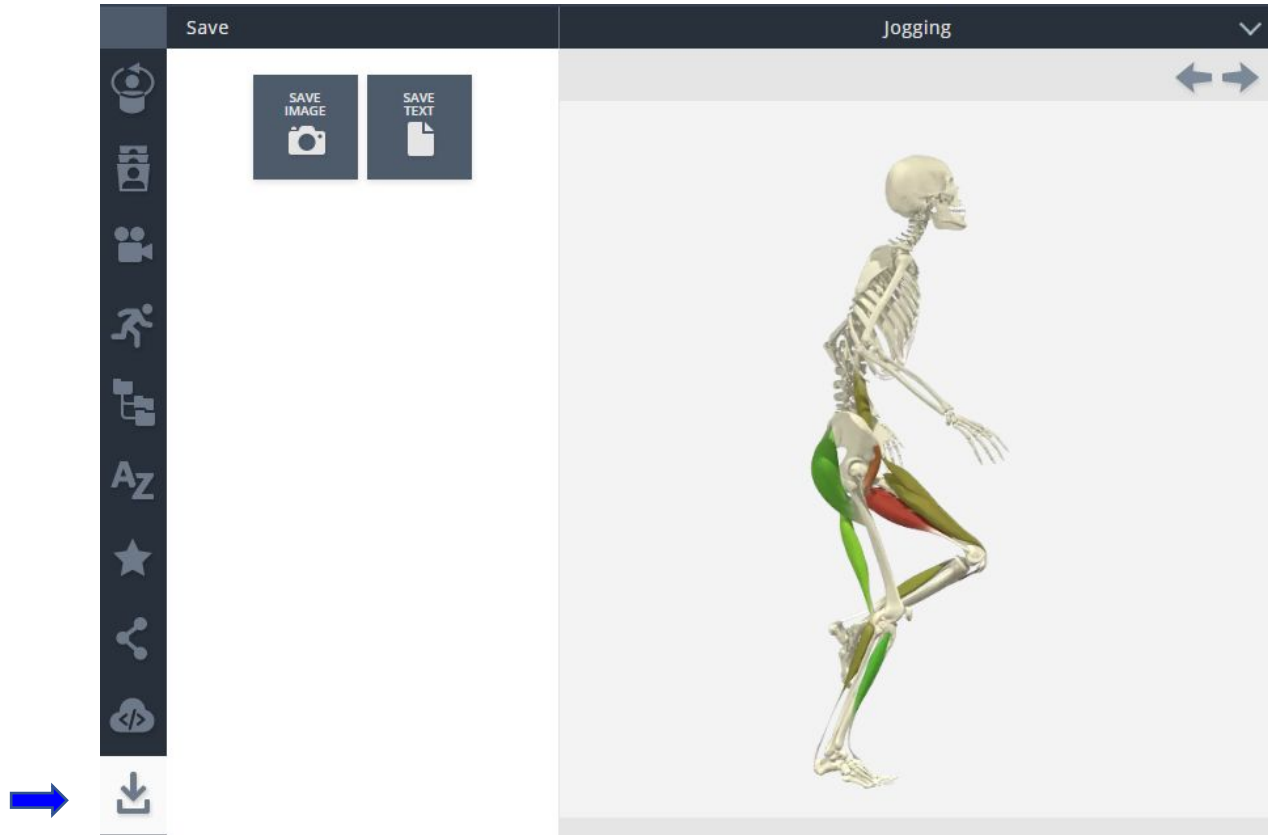
Evidenziare un muscolo e seguirne la contrazione



Non è possibile salvare l'animazione



Salvataggio dati



L'opzione di salvataggio sia delle immagini che del testo garantisce una migliore visualizzazione del materiale.